



Educrat IAS
ACADEMY

No Need of going to Delhi Now!
Prepare for UPSC from Kolkata

EDU-SAMIKSHA

CA MONTHLY MAGAZINE

JANUARY 2026 MCQ COMPIATION



THE HINDU



The Indian EXPRESS



UPSC 2024 EXAM

UPSC 2023 EXAM



AIR 79

MEGHNA
CHAKRAVORTY



AIR 153

SAHARS
KUMAR



AIR 477

PARAMITA
MALAKAR



AIR 165

SAIMA
KHAN



AIR 338

ASHISH
KUMAR



AIR 346

BRATATI
DUTTA



RESERVE LIST

PRIYA
PUROHIT

PARK STREET: 9163228921. 9163218921

January CA MCQs

Q1. Which of the following statements about “Justice Mission 2025” is/are correct?

1. It is a report published by Supreme court on quality of the justice served by the courts.
2. It is designed to simulate blockade operations and precision strikes against Taiwan’s ports and maritime targets.
3. Naval deployments simulating maritime blockades and anti-submarine warfare were key exercises in this mission.

Options:

- A. 1 and 2 only
- B. 2 and 3 only
- C. 1 only
- D. All of the above

Ans: B

Explanation: China conducted large-scale live-fire military drills named “Justice Mission 2025” around Taiwan, including missile launches, fighter jet sorties, and naval deployments.

- Justice Mission 2025 is a high-intensity, two-day PLA (People’s Liberation Army) military exercise involving live-fire missile launches, air and naval manoeuvres.
- It is designed to simulate blockade operations and precision strikes against Taiwan’s ports and maritime targets.
- **Key features:**
 - Live-fire missile launches targeting surrounding waters.
 - Naval deployments simulating maritime blockades and anti-submarine warfare.
 - Joint operations integrating air, sea, missile, and ground forces.
 - One of the largest drills near Taiwan in recent years, indicating escalation.

Q2. Consider the following statements regarding Candida Auris:

1. It is a A fungal pathogen (yeast) causing invasive infections in humans.
2. Infection results in 100% mortality.

How many of these statements is/are correct?

- A. Only 1
- B. Only 2
- C. Both of the above
- D. None of the above

Ans: A

Explanation: A fungal pathogen (yeast) causing invasive infections in humans

- It is a **multidrug-resistant fungal pathogen**
- **Vector / Reservoir:** Primarily healthcare settings such as hospitals and long-term care facilities.
 - Persists on human skin, medical devices, and inanimate surfaces for prolonged periods.
- **Symptoms:** Symptoms vary by site of infection and often resemble bacterial sepsis, making detection difficult.

- Common signs include fever, chills, low blood pressure, tachycardia, and in severe cases, bloodstream infections (candidemia).
- Mortality often **exceeds 50%, even** with therapy.
- **Morphological flexibility:** Can switch from yeast form to filamentous growth, aiding invasion.

Q3. Which of the following statements about National Survey on Extent and Pattern of Substance Use in India is/are incorrect:

1. It is being conducted by Ministry of Health.
2. It assesses the extent, pattern and magnitude of substance use and helps in policy support.

Options:

- A. Only 1
- B. Only 2
- C. Both of the above
- D. None of the above

Ans: A

Explanation: National Survey on Extent and Pattern of Substance Use in India

- **Conducted by:** Ministry of Social Justice & Empowerment (MoSJ&E)
- **First nationwide survey:** 2019
- **Coverage:** All States and Union Territories of India
 - Population aged 10–75 years
- **Objective:** Assess the extent, pattern and magnitude of substance use
 - Provide evidence-based inputs for drug demand reduction policies
- **Substances covered:** Alcohol, Cannabis, Opioids (heroin, opium, pharmaceutical opioids), Sedatives & inhalants, Cocaine, amphetamines (limited prevalence)

Q4. Which of the following statements is/are correct:

1. National Technology Readiness Assessment Framework is an initiative of Ministry of Science and Technology.
2. It aims to Establish a common language between researchers, investors and policymakers.
3. The framework provides objective benchmarks for funding, scale-up and induction

Options:

- A. 1 and 2 only
- B. 2 and 3 only
- C. 1 only
- D. All of the above

Ans: D

Explanation: National Technology Readiness Assessment Framework (NTRAF)

- **Nodal Ministry:** Ministry of Science & Technology
- Developed in collaboration with the Confederation of Indian Industry (CII)
- **Implemented through:** Department of Science & Technology (DST)
- **Core concept:**

- Based on **Technology Readiness Levels (TRLs)**
- TRL scale generally ranges from **TRL 1 (basic research)** to **TRL 9 (commercial deployment)**
- **Objective:**
 - Establish a common language between researchers, investors and policymakers
 - Enable evidence-based funding decisions under national R&D and mission-mode programmes
 - Reduce the “Valley of Death” between TRL 4 and TRL 7 by de-risking promising deep-tech innovations
- **Key features:**
 - **Uniform national framework** for technology evaluation
 - Provides **objective benchmarks** for funding, scale-up and induction
 - Facilitates **industry adoption** of indigenous technologies
 - **Sector-specific annexures:** Tailored assessment pathways for domains such as Healthcare & Pharmaceuticals and Software, recognising sectoral differences.
 - **Self-assessment tool:** Enables researchers and startups to identify technical gaps before applying for funding.

Q5. Consider the following statements regarding Thorium:

1. Thorium is a fissile nuclear material.
2. Thorium absorbs neutron and converts in to Uranium

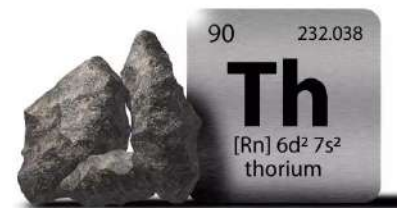
How many of these statements is/are correct?

- A. Only 1
- B. Only 2
- C. Both of the above
- D. None of the above

Ans: B

Explanation: Thorium is a **fertile (not fissile)** nuclear material

- Main isotope: **Thorium-232 (Th-232)**
- **Fuel cycle:**
 - Th-232 absorbs a neutron → converts to **Uranium-233 (U-233)**
 - **U-233 is fissile** and can sustain a nuclear chain reaction
- **Key advantage:**
 - **Abundant** compared to uranium
 - Produces **less long-lived radioactive waste**
 - Lower risk of **nuclear proliferation** (harder weaponisation)
- **Safety aspects:**
 - Lower probability of **meltdown** in certain reactor designs
 - Generates fewer transuranic elements (like plutonium)
- **Forms of use:**
 - Can be used in **solid fuel** or **molten salt reactors (MSR)**



- Suitable for **Advanced Heavy Water Reactors (AHWRs)**
- **India & Thorium:**
 - India possesses about **25% of global thorium reserves**
 - Found mainly in **monazite sands** (Kerala, Tamil Nadu, Odisha, Andhra Pradesh)
 - Central to India's **three-stage nuclear power programme** (Stage-3)
- **Limitations:**
 - Requires an **external neutron source** initially
 - **Reprocessing and technology complexity**
 - Limited commercial-scale reactors worldwide

Q6. Which of the following statements about Sudarshan Chakra defense system is/are correct?

1. It is being developed as AI-enabled, multi-layered national security shield.
2. It will have capabilities like neutralisation of aerial threats such as- Drones (UAVs), Swarm drones, Small aerial targets at short to medium ranges etc.
3. Integrated operation of all the weapon system components will be controlled by a Centralised Command and Control Centre.

Options:

- A. 1 and 2 only
- B. 2 and 3 only
- C. 1 only
- D. All of the above

Ans: D

Explanation: The Sudarshan Chakra defense system is **India's ambitious, AI-enabled, multi-layered national security shield, aiming to integrate indigenous air defense, cyber protection, and surveillance to safeguard critical assets and population**

- Target year: 2035
- Developing agency: DRDO
- **Primary role:** Neutralisation of aerial threats such as- Drones (UAVs), Swarm drones, Small aerial targets at short to medium ranges
- **Key Components:**
 - **Indigenous Quick Reaction Surface to Air Missiles (QRSAM):** Developed by DRDO for short range (5-30 km).
 - **Advanced Very Short Range Air Defence System (VSHORADS) missiles**
 - **It is a Man Portable Air Defence System (MANPADS)** designed to neutralize low-altitude aerial threats at short ranges.
 - **A high-power laser-based Directed Energy Weapon (DEW):** Developed by Centre for High Energy Systems and Sciences can engage targets at the speed of



light and use an intense **laser beam to cut through the target.**

- **Command Centre:** Integrated operation of all the weapon system components is controlled by a Centralised Command and Control Centre.

Q7. Consider the following statements regarding Pralay Missile:

1. It is an indigenously developed short-range quasi ballistic missile.
2. It is capable of carrying nuclear warheads.

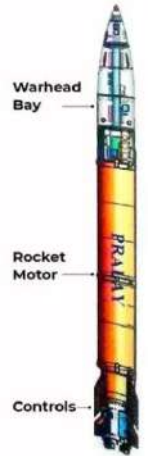
How many of these statements is/are correct?

- A. Only 1
- B. Only 2
- C. Both of the above
- D. None of the above

Ans: A

Explanation: Indigenously developed short-range quasi ballistic missile (SRBM)

- **Developed by: DRDO** (Defence Research and Development Organisation)
- **Range: 150–500 km** (variable depending on payload) **Propulsion: Solid-fuel, quasi-ballistic trajectory**
- **Payload capability:** Conventional warheads only



Q8. Which of the following statements about UNRWA is/are incorrect:

1. It was established by UN General Assembly Resolution 302 (IV).
2. It is a permanent UN agency and the mandate does not require any kind of renewal.

Options:

- A. Only 1
- B. Only 2
- C. Both of the above
- D. None of the above

Ans: B

Explanation: United Nations Relief and Works Agency for Palestine Refugees in the Near East

- **Established:** 1949 by UN General Assembly Resolution 302 (IV)
- **Operational since:** 1950
- **Mandate:** To provide humanitarian assistance, protection, and development services to Palestine refugees
- **Areas of operation (5 fields):** Gaza Strip, West Bank (including East Jerusalem), Jordan, Lebanon, Syria
- **Headquarters:** Amman (Jordan) and Gaza
- **Legal status:** A temporary UN agency, mandate renewed periodically by the UN General Assembly



Q9. Which of the following statements is/are correct:

1. Amazon's Stingless Bees are harmless as they either lack stingers or have non-functional stingers.
2. They are native to Amazon forest only.
3. Honey produced by them is more liquid, less sweet, and highly medicinal

Options:

- A. 1 and 2 only
- B. 2 and 3 only
- C. 1 and 3 only
- D. All of the above

Ans: C**Explanation: Amazon's Stingless Bees**

- Stingless bees are a group of bees that either lack stingers or have non-functional stingers, making them harmless to humans. They are crucial pollinators in tropical ecosystems.
- Defend themselves by **biting** or using **resin**
- **Geographical distribution: Amazon Basin (South America)**
- Also found in tropical forest of **Africa, Southeast Asia, and Australia**
-
- **Honey production:** Produce **small quantities of honey**
 - Honey is **more liquid, less sweet, and highly medicinal**
- **Amazonian stingless bees have become the first insects in the world to be granted legal rights** after Peruvian municipalities passed a landmark ordinance recognising their right to exist and flourish.
 - Strengthens conservation: Provides legal tools to challenge deforestation, pollution and habitat destruction

**Q10. Consider the following statements regarding PathGennie Software:**

1. It is an AI-driven software platform developed to fast-track drug discovery and development.
2. It is being developed by researchers of AIIMS, Delhi.

How many of these statements is/are correct?

- A. Only 1
- B. Only 2
- C. Both of the above
- D. None of the above

Ans: A**Explanation: PathGennie is an AI-driven software platform developed to fast-track drug discovery and development.**

- Developed by Scientists at **S. N. Bose National Centre for Basic Sciences, Kolkata.**
- It is an **open-source** computational framework designed to efficiently simulate rare molecular events, especially drug unbinding from protein targets, without introducing

artificial distortions.

- It helps predict drug residence time, a key factor in drug efficacy and safety.
- **Primary purpose:**
 - Rapid identification of drug targets
 - Prediction of disease pathways
 - Shortening the drug discovery timeline

Q11. Which of the following statements about Galaxy Frog is/are correct?

1. Shola forests and montane evergreen forests are habitat for this species.
2. They are explosive breeders and tadpoles develop in fast-flowing streams.
3. IUCN conservation status for this species is Endangered.

Options:

- A. 1 and 2 only
- B. 2 and 3 only
- C. 1 only
- D. All of the above

Ans: A

Explanation: Galaxy Frog (*Melanobatrachus indicus*) 🐸

- **Endemic to India:** Found only in the **Western Ghats** (Kerala & Tamil Nadu).
- **Family: Microhylidae** (narrow-mouthed frogs).
- **Common name origin:** Distinctive **black body with bluish/whitish speckles**, resembling a galaxy/starry sky.
- **Habitat:**
 - Shola forests and **montane evergreen forests**
 - Leaf litter, forest floor; breeding near **ephemeral streams**.
 - **Altitude range:** ~700–2000 m above sea level.
- **Lifestyle:**
 - **Fossorial/cryptic** (burrowing, rarely seen)
 - Emerges mainly during **monsoon** for breeding
- **Breeding behaviour:** Explosive breeder, Tadpoles develop in **fast-flowing streams**
- **Conservation status (IUCN): Vulnerable (VU)**



Q12. Consider the following statements regarding Nimesulide:

1. It is used for short-term management of pain and fever.
2. Veterinary use of this drug led to mass decline of vulture population in India.

How many of these statements is/are correct?

- A. Only 1
- B. Only 2
- C. Both of the above
- D. None of the above

Ans: C

Explanation: Nimesulide

- **Type:** Non-steroidal anti-inflammatory drug (**NSAID**)
- **Uses:** Treatment of **acute pain, inflammation, and fever**
 - Short-term management of pain and fever.
- **Key Concern:** Associated with **hepatotoxicity (liver damage)**
- **Known risk:** Potential **hepatotoxicity**, especially at higher doses or prolonged use.
- **Regulatory status in India:** Union Government has banned the manufacture, sale and distribution of oral formulations of Nimesulide above 100 mg with immediate effect under Section 26A of the Drugs and Cosmetics Act, 1940.
- The ban was imposed under **Section 26A of the Drugs and Cosmetics Act, 1940**, which empowers the government to prohibit drugs harmful to public health.
- **Global status: Banned or restricted** in several countries (e.g., parts of Europe) due to liver toxicity
- **Veterinary angle-** Veterinary use of Nimesulide led to **mass decline of vulture population in India**
- Vultures feeding on carcasses treated with Nimesulide suffered **acute renal failure**

Q13. Which of the following statements about Bomb Cyclone is/are incorrect:

1. It is a mid-latitude cyclone that intensifies extremely rapidly.
2. Common over North Atlantic and North Pacific Oceans.

Options:

- A. Only 1
- B. Only 2
- C. Both of the above
- D. None of the above

Ans: D

Explanation: Bomb Cyclone (Explosive Cyclogenesis)

- **Definition:** A mid-latitude cyclone that **intensifies extremely rapidly**.
- **Key Criterion:** Central pressure drops by **≥ 24 millibars in 24 hours**.
- **Region of occurrence:** Mainly in **mid-latitudes (30° – 60°)**
 - Common over **North Atlantic and North Pacific Oceans**.
- **Formation conditions:** Strong **temperature contrast** between cold continental air and warm ocean air
 - Interaction of **polar jet stream** and surface low-pressure system
- **Weather impacts:**
 - **Hurricane-force winds**
 - Heavy **rainfall or snowfall (blizzards)**
 - **Coastal flooding** and high waves
- **Difference from tropical cyclone:**
 - Energy source: **baroclinic (temperature gradients)** vs **latent heat** in tropical cyclones
- **Climate change link:** Warming oceans may **increase intensity and frequency** of



bomb cyclones.

Q14. Which of the following statements regarding Electronics Component Manufacturing Scheme (ECMS) is/are correct:


1. The scheme is under the Ministry of Science and Technology.
2. It is part of India's broader strategy to become a global hub for electronics production and strengthen Global Value Chain (GVC) linkages.
3. Turnover linked incentive is one of the features of the scheme.

Options:

- A. 1 and 2 only
- B. 2 and 3 only
- C. 1 and 3 only
- D. All of the above

Ans: B

Explanation: Electronics Component Manufacturing Scheme (ECMS).

- Under the **Ministry of Electronics and Information Technology (MeitY)**.
- Launched to boost domestic manufacturing of electronic components and sub-assemblies, and reduce import dependence.
- Part of India's broader strategy to become a global hub for electronics production and strengthen Global Value Chain (GVC) linkages.
-  **Key Features**
 - **Incentive Types:** Turnover-linked incentives
 - **Capital expenditure (capex) incentives**
 - **Hybrid incentives (combination of turnover + capex)**
 - Incentives differ by product type to address segment-specific challenges.

Q15. Consider the following statements:

1. Bulgaria officially adopted the euro, becoming the 21st member of the Eurozone.
2. The Maastricht Treaty laid the foundation for the European Union by paving the way for a common Economic and Monetary Union, the adoption of the euro as a single legal tender.

How many of these statements is/are correct?

- A. Only 1
- B. Only 2
- C. Both of the above
- D. None of the above

Ans: C

Explanation: Bulgaria officially adopted the **euro**, becoming the **21st member of the Eurozone**, nearly **20 years after joining the European Union**, a move with major **economic, political, and geopolitical implications**.

- **Rationale:** Euro adoption aims to boost trade, improve market transparency, and attract investment in Bulgaria (EU's poorest member state).
- It will deepen Bulgaria's integration with the European Union, reinforcing its Western

alignment and reducing Russian economic influence.

- **Eurozone:** The **Maastricht Treaty (1992)** (also known as the Treaty on European Union) laid the foundation for the European Union by paving the way for a common Economic and Monetary Union, the adoption of the euro as a single legal tender, the creation of a unified central banking system through the European Central Bank (ECB), and the establishment of a common economic region (Eurozone).
- The Eurozone comprises European Union Member States that have adopted the euro as their common currency.
- The eurozone was established with the official launch of the euro on 1st January 1999, in 11 countries. With Croatia joining in 2023 and Bulgaria's adoption, the euro is now used by over 350 million people across Europe.



Q16. Which of the following statements about Salal Dam is/are correct?

1. It is the first major hydropower project on Ravi in India
2. It is constructed under Indus Waters Treaty (1960) provisions.
3. The reservoir has high silt load due to young Himalayan geology.

Options:

- A. 1 and 2 only
- B. 2 and 3 only
- C. 1 only
- D. All of the above

Ans: B

Explanation:

- On Chenab River
- **Location:** Near Reasi district, Jammu & Kashmir
- **Type:** Run-of-the-river hydroelectric project
- Installed Capacity: 690 MW (6×115 MW)
- **Developer/Operator:** NHPC Limited
- River System: Indus Basin
- Strategic & Treaty Significance
 - First major hydropower project on Chenab in India
 - Constructed under Indus Waters Treaty (1960) provisions

- Design approved after negotiations with Pakistan
- **Technical Features**
 - Concrete gravity dam
 - High silt load due to young Himalayan geology
 - Features underwater inspection and sediment management mechanisms

Q17. How many of the following countries border the Red Sea

1. Iraq
2. Egypt
3. Sudan
4. Kuwait
5. Saudi Arabia
6. Israel

Options:

- A. Only III countries
- B. Only IV countries
- C. All of them
- D. Only V countries

Ans: B

Explanation: Countries Along the Red Sea

- Africa: Egypt, Sudan, Eritrea, Djibouti
- Asia: Saudi Arabia, Yemen, Israel, Jordan



Q18. Which of the following statements about Notifiable Disease is/are incorrect:

1. These are diseases that are mandatorily required to be reported to government authorities.
2. The list of notifiable disease is uniform across all the states and is launched by Ministry of Health of Union government.

Options:

- A. Only 1

- B. Only 2
- C. Both of the above
- D. None of the above

Ans: B

Explanation: Diseases that are **mandatorily required to be reported** to government authorities when diagnosed are notifiable disease.

- *List varies from state to state*

Q19. Which of the following statements regarding Superbugs is/are correct:

1. Superbugs show resistance to multiple antibiotics.
2. Gene mutation is not one of the reasons for evolution of superbugs.
3. One Health Approach is one of the strategies to deal with superbugs in a holistic manner.

Options:

- A. 1 and 2 only
- B. 2 and 3 only
- C. 1 and 3 only
- D. All of the above

Ans: C

Explanation: Definition: Microorganisms (mainly bacteria) that have developed resistance to multiple antibiotics.

- **Cause:** Overuse, misuse and incomplete courses of antibiotics in humans, animals and agriculture.
- **Mechanism of Resistance**
 - Gene mutation
 - Horizontal gene transfer (plasmids)
 - Biofilm formation
- **Global & National Initiatives**
 - WHO Global Action Plan on Antimicrobial Resistance
 - National Action Plan on AMR (2017–2021) (India)
 - Red Line Campaign – prescription-only antibiotics
 - One Health Approach (human–animal–environment link)

Q20. Consider the following statements about National Intelligence Grid:

1. It is under Ministry of Home Affairs.
2. It was conceptualized after 26/11 Mumbai attacks.

How many of these statements is/are correct?

- A. Only 1
- B. Only 2
- C. Both of the above
- D. None of the above

Ans: C

Explanation: National Intelligence Grid

- **Ministry: Ministry of Home Affairs (MHA)**
- **Purpose:** To integrate and analyse data from multiple databases for counter-terrorism and national security.
- **Conceptualised after 26/11** Mumbai terror attacks (2008).
- **Aimed at improving intelligence coordination among agencies.**
- **Nature & Structure**
 - Secure, centralized database (not an intelligence agency)
 - Enables real-time access to information for authorised agencies
 - Data is accessed only for specific cases
- **Key Databases Integrated-** Immigration & Visa, Airline and Railway travel data, Banking & financial transactions, Telecom records etc.
- **Agencies with Access-** IB, RAW, CBI, NIA etc.
- **Context-** NATGRID has been linked to the National Population Register (NPR), allowing authorised agencies real-time access to family-level demographic data of nearly 119 crore residents, significantly expanding India's intelligence and investigation architecture.

Q21. Which of the following statements about RAH-VEER initiative is/are correct?

1. It is launched by Ministry of Road Transport and Highways (MoRTH).
2. It is to **encourage, recognise and reward Good Samaritans** who help road accident victims during the **golden hour**.
3. There is a provision of ₹25,000 reward and Certificate of Appreciation, up to five times a year for repeat acts.

Options:

- A. 1 and 2 only
- B. 2 and 3 only
- C. 1 only
- D. All of the above

Ans: D

Explanation: RAH-VEER stands for “Road Accident Heroes – Value, Empower, and Recognise”.

- **Launched by:** Ministry of Road Transport and Highways (MoRTH).
- **Objective:** To **encourage, recognise and reward Good Samaritans** who help road accident victims during the **golden hour**.
- **Key Features:** Applies to **citizens who provide immediate assistance** to road accident victims.
- **Assistance may include:**
 - Calling emergency services
 - Transporting victims to hospitals
 - Providing first aid or lifesaving help
 - Emphasises **timely medical intervention** to reduce fatalities.
- **Incentives:** ₹25,000 reward and Certificate of Appreciation, up to five times a year for repeat acts.



- **Legal Safeguards:** Aligned with **Good Samaritan Guidelines** (SC-backed).
- **Protects helpers from:** Legal harassment, Police questioning, Civil or criminal liability.

Q22. Which of the following statements about Olive Ridley Sea Turtles is/are correct?

1. IUCN conservation status for the species is critically endangered.
2. “Arribada” is a **mass nesting phenomenon** where thousands of turtles come ashore simultaneously
3. The species is omnivorous.

Options:

- A. 1 and 2 only
- B. 2 and 3 only
- C. 1 only
- D. All of the above

Ans: B

Explanation: Olive Ridley Sea Turtles

- **IUCN Status: Vulnerable**
- **CITES: Appendix I** (highest level of protection)
- **Wildlife Protection Act, 1972 (India): Schedule I**
- Known for “Arribada” — **mass nesting phenomenon** where thousands of turtles come ashore simultaneously.
- **Major Nesting Sites in India:**
 - **Gahirmatha Beach** – Odisha (largest rookery in the world)
 - **Rushikulya River mouth** – Odisha
 - **Devi River mouth** – Odisha
 - Also found along **Andhra Pradesh, Tamil Nadu, Kerala, and West Bengal** coasts.
- **Habitat: Warm tropical waters** of the **Pacific, Atlantic, and Indian Oceans**.
- Nesting on **sandy beaches**.
- **Migration: Long-distance migratory species.**
 - Follow **ocean currents** for movement and feeding.
- **Diet: Omnivorous** — feeds on jellyfish, crabs, shrimp, algae, and fish.
- **Operation Olivia-** an annual initiative by the Indian Coast Guard (ICG) to protect Olive Ridley turtles during their breeding and nesting season (November to May) along Odisha's coast.



Q23. Which of the following statements about RAH-VEER initiative is/are correct?

1. It is launched by Ministry of Road Transport and Highways (MoRTH).
2. It is to **encourage, recognise and reward Good Samaritans** who help road accident victims during the **golden hour**.
3. There is a provision of ₹25,000 reward and Certificate of Appreciation, up to five times a year for repeat acts.

Options:

- A. 1 and 2 only
- B. 2 and 3 only
- C. 1 only
- D. All of the above

Ans:D

Explanation: RAH-VEER stands for “Road Accident Heroes – Value, Empower, and Recognise”.

- **Launched by:** Ministry of Road Transport and Highways (MoRTH).
- **Objective:** To encourage, recognise and reward **Good Samaritans** who help road accident victims during the **golden hour**.
- **Key Features:** Applies to **citizens who provide immediate assistance** to road accident victims.
- **Assistance may include:**
 - Calling emergency services
 - Transporting victims to hospitals
 - Providing first aid or lifesaving help
 - Emphasises **timely medical intervention** to reduce fatalities.
- **Incentives:** ₹25,000 reward and Certificate of Appreciation, up to five times a year for repeat acts.
- **Legal Safeguards:** Aligned with **Good Samaritan Guidelines** (SC-backed).
- **Protects helpers from:** Legal harassment, Police questioning, Civil or criminal liability.



Q24. Which of the following statements about Rani Velu Nachiyar is/are incorrect:

1. She was one of the pioneers of anti-colonial resistance.
2. She deployed the **first recorded human bomb** in Indian military history

Options:

- A. Only 1
- B. Only 2
- C. Both of the above
- D. None of the above

Ans: D

Explanation: Rani Velu Nachiyar (PIB)

- Rani Velu Nachiyar, also known as ‘*Veeramangai*’, was born on 3rd January 1730.
- Pioneer of Anti-Colonial Resistance: She is revered as the first Indian queen to launch an organised armed resistance against the British East India Company.
- Region: Sivaganga, present-day Tamil Nadu
- First Indian queen to wage war against the British East India



Company.

- Her revolt represents the earliest phase of organised anti-colonial assertion in South India.
- **Ruler of Sivaganga:** After the death of her husband Muthuvaduganathaperiya Udaiyathevar, she ascended the throne of Sivaganga.
- She deployed the **first recorded human bomb** in Indian military history as a tactical weapon against colonial forces.
- She also organised the **first trained women's military unit**, institutionalising women's participation in warfare in the late eighteenth century.

Q25. Which of the following statements regarding Suryastra Rocket Launcher is/are correct:

1. Suryastra is India's first Made-in-India, multi-calibre.
2. It is a universal nature with multi calibre capability.
3. It has ability to Simultaneous strikes at different ranges.

Options:

- A. 1 and 2 only
- B. 2 and 3 only
- C. 1 and 3 only
- D. All of the above

Ans: D

Explanation: Suryastra Rocket Launcher

- Suryastra is **India's first Made-in-India, multi-calibre, long-range rocket launcher system developed by Pune-based NIBE Limited** in collaboration with Israel's Elbit Systems.
- **Key features:**
 - **Range:** 150 km and 300 km (tactical deep-strike capability).
 - **Universal launcher:** Can fire multiple calibres (122 mm, 160 mm, 306 mm) and compatible tactical missiles.
 - **High precision:** Circular Error Probable (CEP) of < 5 metres in trials.
 - **Multi-target engagement:** Simultaneous strikes at different ranges.
 - **Mobility:** Adaptable to 4×4, 6×6, and 8×8 wheeled chassis.



Q26. Consider the following statements about Monroe Doctrine:

1. It is propounded by Abraham Lincoln.
2. It propounds that any European intervention in the Americas would be viewed as a threat to U.S. security.

How many of these statements is/are correct?

- A. Only 1
- B. Only 2

- C. Both of the above
D. None of the above

Ans: C

Explanation: Monroe Doctrine:

- **By: U.S. President James Monroe**
- **Context:** European colonial powers' attempts to reassert influence in **Latin America**.
- **Core Principle: "America for the Americans"**
 - Western Hemisphere closed to **future European colonisation**.
- **Key Provisions:**
 - **No new European colonisation:** European powers should not establish new colonies in North or South America.
 - **Non-interference warning:** Any European intervention in the Americas would be viewed as a threat to U.S. security.
 - **Reciprocal restraint:** The U.S. promised not to interfere in existing European colonies or in European internal affairs.
 - **Separate spheres:** The political systems of Europe and the Americas were to remain distinct.
- **Nature:**
 - Initially a **unilateral foreign policy statement**, not international law.
 - Became a foundation of **U.S. hemispheric dominance**.
- **Later Interpretations / Extensions:**
- **Roosevelt Corollary (1904):**
 - U.S. claimed the right to intervene in Latin American countries to maintain order.
 - Used to justify U.S. interventions during the **Cold War** to counter communism.

Q27. Which of the following statements about Aditya-L1 mission is/are correct?

1. It is launched as world's first solar observatory.
2. It is launched by ISRO and the observatory is placed on Lagrange point.
3. When placed on the langrage point a spacecraft, can stay at these points without using much fuel to maintain its orbit

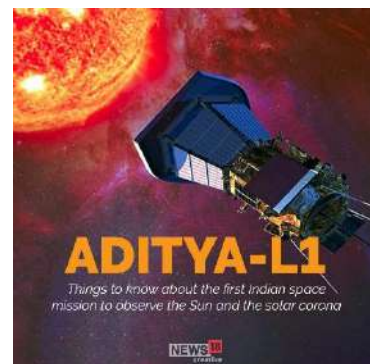
Options:

- A. 1 and 2 only
B. 2 and 3 only
C. 1 only
D. All of the above

Ans: B

Explanation: Launched by: ISRO (Indian Space Research Organisation)

- **Launch date:** 2 September 2023
- **Mission type:** India's **first dedicated solar observatory**.
- Makes India the **4th country** (after USA, Russia, Japan/ESA) with a solar observatory at L1
- **Orbit & Location**



- Placed in a **Halo orbit around Lagrange Point-1 (L1)** of the **Sun–Earth system**
- **Distance from Earth:** ~1.5 million km

Lagrange points are special positions in space where the **gravitational forces of two large orbiting bodies**, such as the **Sun and the Earth**, balance each other out.

- This means that a small object, such as a **spacecraft**, can stay at these points without using much fuel to maintain its orbit.

- **Mission Objectives**
 - Study the **solar atmosphere** (photosphere, chromosphere & corona)
 - Understand **coronal heating** and **solar wind acceleration**
 - Observe **solar flares** and **Coronal Mass Ejections (CMEs)**
 - Improve **space weather forecasting**
- Enhances India's **space weather prediction capability**
- Supports protection of **satellites, power grids & communication systems**
- Strengthens India's role in **heliophysics research**
- **Context: ISRO calls for proposals from Indian scientists to analyse data from Aditya-L1.**

Q28. Which of the following statements about India's first urban night safari is/are correct?

1. It is being developed in the Kukrail Reserve Forest.
2. Kukrail Forest Area, along the Kukrail River on the northern outskirts of Gurgaon.
3. It is aimed to boost eco-tourism and make urban wildlife accessible for education, recreation, and wildlife appreciation

Options:

- A. 1 and 2 only
- B. 1 and 3 only
- C. 3 only
- D. All of the above

Ans: B

Explanation: India's first urban night safari is being developed in the Kukrail Reserve Forest, Lucknow (Uttar Pradesh) — a nighttime wildlife experience where visitors can observe animals in their natural-like settings after dusk.

- **Purpose & Significance**
 - Boost eco-tourism and make urban wildlife accessible for education, recreation, and wildlife appreciation.
 - Encourages conservation awareness and supports nature-based sustainable tourism. Outlook Traveller
 - Adds a unique tourist attraction to Lucknow's offerings and enhances urban biodiversity initiatives.

Q29. Which of the following statements about BPAN is/are incorrect:

1. Each BPAN is a 12-character alphanumeric code (with QR code) that uniquely identifies

a battery.

2. Designed to enable end-to-end traceability of batteries — from raw material sourcing to disposal.

Options:

- A. Only 1
- B. Only 2
- C. Both of the above
- D. None of the above

Ans: A

Explanation: BPAN stands for **Battery Pack Aadhaar Number** — a **unique, Aadhaar-like digital identity** assigned to individual battery packs, especially those used in **electric vehicles (EVs)** and larger battery systems.

Govt releases draft guidelines for Battery Pack Aadhaar to enable lifecycle tracking



- The Ministry of Road Transport and Highways has proposed an Aadhaar-like unique ID for electric vehicle batteries to ensure lifecycle traceability and efficient recycling.
- Each BPAN is a **21-character alphanumeric code** (with QR code) that uniquely identifies a battery across its entire **life cycle**.
- Designed to enable **end-to-end traceability** of batteries — from **raw material sourcing** → **production** → **use** → **recycling/disposal**.
- Helps curb **counterfeit batteries**, boost **consumer trust**, and improve **safety and performance monitoring**.
- Supports **efficient recycling, second-life applications** (repurposing old EV batteries), and **regulatory compliance** in the electric mobility ecosystem.
- Battery **manufacturers or importers must assign** a unique BPAN to each battery they introduce in the Indian market (including those used in-house).
- The BPAN must be displayed prominently on the battery pack and recorded in a **central BPAN portal**.
- If a battery is **recycled or repurposed**, a **new BPAN** must be issued reflecting the change.
- Priority to EV batteries: EV batteries (80–90% of India's Li-ion demand) to be covered first; industrial batteries above 2 kWh also recommended.

Q30. Which of the following statements regarding Somnath Temple is/are correct:

1. It is one of the 12 Jyotirlingas of Lord Vishnu.
2. King Bhimdev I of the Solanki dynasty rebuilt the temple in stone after its destruction by Mahmud of Ghazni.
3. It is located on Abadhrit Samudra Marg indicates an uninterrupted sea route to the South Pole.

Options:

- A. 1 and 2 only
- B. 2 and 3 only
- C. 1 and 3 only
- D. All of the above

Ans: B

Explanation: Somnath Temple is **one of the 12 Jyotirlingas of Lord Shiva**.

- According to tradition, it was built in phases—first in gold by Somraj (Moon God), then in silver by Ravana, later in wood by Lord Krishna.
- **King Bhimdev I** (or Bhima I) of the Solanki dynasty rebuilt the temple in stone after its destruction by Mahmud of Ghazni in 1026 CE.
- **Geographical Significance:** Situated at **the confluence of Kapila, Hiran, and Saraswati rivers with the Arabian Sea**.
- **Abadhith Samudra Marg (Tirth Stambh)** indicates an uninterrupted sea route to the South Pole, with the nearest landmass ~9,936 km away, reflecting ancient Indian geographical knowledge.
- **Cycles of Destruction & Rebuilding:** First major attack in 1026 AD by Mahmud of Ghazni; documented by Persian scholar Al-Biruni.
- The temple was looted and destroyed multiple times, including in 1026, 1297, 1394, and 1706 CE (Aurangzeb). 2026 marks 1,000 years since the first attack, a significant civilisational milestone.
- The **7th existing temple was rebuilt post-independence as a symbol of national resurgence**. **Sardar Vallabhbhai Patel initiated the reconstruction** in 1947.
- **The Pran-Pratistha was performed by President Dr. Rajendra Prasad** on 11th May, 1951. Reconstruction was supported by KM Munshi, author of “**Somanatha: The Shrine Eternal**”.

Q31. Consider the following statements about Biomaterials:

1. Biomaterials reduce environmental impact.
2. **Drop-in biomaterials** are chemically identical to petroleum-based materials but can't be used in existing manufacturing systems without major modifications.

How many of these statements is/are correct?

- A. Only 1
- B. Only 2
- C. Both of the above
- D. None of the above

Ans: A

Explanation: Biomaterials are **natural or synthetic materials** designed to **interact with biological systems for medical, dental, or diagnostic etc. applications**.

- Unlike traditional petroleum-based materials, biomaterials are designed to reduce environmental impact while supporting sustainable production systems.
- They are increasingly used in sectors such as packaging, textiles, construction, and healthcare.
- Broadly, biomaterials are **classified into three categories**.
 - **Drop-in biomaterials** are chemically identical to petroleum-based materials and can be used in existing manufacturing systems without major modifications. Examples include bio-PET used in packaging.
 - **Drop-out biomaterials** are chemically different and require new processing or end-of-life systems, such as polylactic acid (PLA), which needs industrial

composting.

- **Novel biomaterials** go a step further by offering entirely new properties, including self-healing materials, bioactive implants, and advanced composites with enhanced performance characteristics.

Q32. Which of the following statements about Popocatepetl Volcano is/are correct?

1. It is a stratovolcano located in USA.
2. It is part of Pacific Fire ring.
3. Also known as Smoking Mountain.

Options:

- A. 1 and 2 only
- B. 2 and 3 only
- C. 1 only
- D. All of the above

Ans: B

Explanation: Popocatepetl Volcano

- A National Autonomous University of Mexico (UNAM) has produced the first 3D seismic image of the internal structure of Mexico's Popocatepetl volcano, improving understanding of magma movement and eruption behaviour in a high-risk volcanic zone. **Location:** Central Mexico, near Mexico City
- **Type:** Active stratovolcano
- **Elevation:** ~5,426 m (second-highest peak in Mexico)
- **Part of:** Trans-Mexican Volcanic Belt
- **Nickname:** *El Popo*
- Forming part of the **Pacific Ring of Fire**
- Also known as "**Smoking Mountain**", it is a **steep-sided stratovolcano in central Mexico**, located on the **border of the states of México and Puebla**.



Q33. Which of the following statements about Mpemba Effect is/are correct?

1. It is a phenomenon where hot water freezes faster than cold water under certain conditions.
2. Mpemba effect universally holds true.
3. When hot water begins freezing at a higher temperature than cold water it solidifies quicker.

Options:

- A. 1 and 2 only
- B. 2 and 3 only
- C. 1 and 3 only
- D. All of the above

Ans: C

Explanation:

- **Definition:** Phenomenon where **hot water freezes faster than cold water** under

certain conditions **Named after: Erasto Mpemba**, a Tanzanian student (1963)

- **Functioning**
- **Evaporation:** Hot water loses some mass as vapour, so less water remains to freeze, speeding up the process.
 - **Dissolved gases:** Heating drives out dissolved gases, subtly changing the water's freezing characteristics.
 - **Convection currents:** Temperature gradients in hot water create internal circulation that enhances heat loss.
 - **Supercooling:** Hot water may begin freezing at a higher temperature than cold water, allowing it to solidify sooner.
 - **Environmental effects:** Hot containers can alter their surroundings, improving overall cooling efficiency.
- **Conditions**
 - Observed under **specific experimental conditions**
 - Not a universal rule
 - Depends on container, environment, and initial temperatures
- **Context:** Indian scientists have developed the first supercomputer-powered simulation that successfully captures the Mpemba effect, resolving a long-standing scientific paradox of hot water freezing faster than cold.



Q34. Which of the following statements about Wolf supermoon is/are incorrect:

1. Wolf supermoon is a Supermoon occurring during the Full Moon of December.
2. Occurs when the Full Moon coincides with perigee.

Options:

- A. Only 1
- B. Only 2
- C. Both of the above
- D. None of the above

Ans: A

Explanation: Wolf supermoon is a **Supermoon** occurring during the **Full Moon of January**

- **Name origin:** From **Native American tradition**—wolves were heard howling during winter
- **Supermoon – Key Concept**
 - Occurs when the **Full Moon coincides with perigee**
 - **Perigee:** Point where the Moon is **closest to Earth**
 - Appears **larger and brighter** than an average full moon
- Other traditional names: *Cold Moon, Frost Exploding Moon*
- It is associated with mid-winter beliefs of wolves being heard howling more frequently, though the Moon itself undergoes **no physical change**.



Q35. Which of the following statements regarding Electrification of Indian Railways is/are correct:

1. Railways have achieved 99.2% electrification of ~70,000 route km broad-gauge network.
2. Indian Railways has become the biggest electrified rail system globally.
3. Electric traction is ~70% costlier than diesel, increasing operating costs.

Options:

- A. 1 and 2 only
- B. 2 and 3 only
- C. 1 and 3 only
- D. All of the above

Ans: A

Explanation: Electrification of Indian Railways

- **Mission 100% Railway Electrification**
- **Launched in:** The electrification drive began historically in **1925**, but Mission-mode acceleration was undertaken **post-2014**.
- **Aim:**
 - Eliminate diesel traction and shift to cleaner electric traction.
 - Reduce carbon emissions, fuel import dependence, and operating costs.
 - Improve speed, reliability, and efficiency of train operations.
- **Key features: 99.2% electrification** of ~70,000 route km broad-gauge network (as of Nov 2025).
 - Electrification pace increased from **1.42 km/day (2004–14)** to **15+ km/day (2019–25)**.
 - **25 States/UTs fully electrified**; only ~0.8% network pending.
- **Significance:**
 - Major reduction in greenhouse gas emissions and air pollution.
 - Electric traction is **~70% cheaper than diesel**, lowering operating costs.
 - Reduced dependence on imported fossil fuels; increased use of renewables.
- **Context:** Indian Railways becomes the **biggest electrified rail system globally**.



Q36. Consider the following statements about Payments Regulatory Board:

1. It is the statutory body through which the Reserve Bank of India exercises regulatory and supervisory powers over payments.
2. Deputy Governor of RBI is the chairperson of PRB.

How many of these statements is/are correct?

- A. Only 1
- B. Only 2
- C. Both of the above
- D. None of the above

Ans: A

Explanation: The Payments Regulatory Board (PRB) is the statutory body through which the Reserve Bank of India exercises regulatory and supervisory powers over payment and

settlement systems in India, ensuring safety, efficiency, and stability of digital and non-cash payments.

- Rapid growth of **digital payments (UPI, wallets, fintechs)** created the need for a **specialised regulatory body**
- **Established** under **Section 3 of the Payment and Settlement Systems Act, 2007.**
- Replaced the earlier **Board for Regulation and Supervision of Payment and Settlement Systems (BPSS).**
- **Composition**
 - **Chairperson:** RBI Governor
 - **Members:** Deputy Governor (RBI), One RBI nominee, Three Central Government nominees
 - **RBI retains overall control**
- **Functions**
 - Regulation of **payment systems** (UPI, wallets, prepaid instruments, etc.)
 - Authorization of **payment system operators**
 - Policy formulation for **digital payments**
 - Supervision of **fintech payment entities**
 - **Risk management:** Addresses systemic risk, settlement finality, and consumer protection.



Q37. Which of the following statements about UNFCCC is/are correct?

1. It was adopted at the Rio Earth Summit, 1992.
2. UNFCCC gives binding targets to the parties.
3. Paris Agreement is not under UNFCCC and aims to replace it.

Options:

- A. 1 and 2 only
- B. 2 and 3 only
- C. 1 only
- D. All of the above

Ans: C

Explanation: United Nations Framework Convention on Climate Change (UNFCCC)

- **Adopted:** 1992 at **Rio Earth Summit, Entered into force:** 1994
- **Secretariat:** Bonn, Germany
- **Nature:** Framework convention (**non-binding** emission targets)
- **Objective:** Stabilize greenhouse gas (GHG) concentrations to prevent dangerous anthropogenic interference with the climate system (Article 2)
- **Key Principles**
 - Common But Differentiated Responsibilities and Respective Capabilities (CBDR-RC)
 - **Equity**
 - **Precautionary principle**
 - **Sustainable development**
 - **Polluter Pays Principle** (implicit)



- **Parties: 197 Parties** (near-universal membership)
- UNFCCC itself does **not** impose binding emission reduction targets
- Paris Agreement is under UNFCCC, not a replacement
- **Context:** Recently USA has pulled out of UNFCCC.

Q38. Which of the following statements about Ayush Export Promotion Council is/are correct?

1. It aims to position India as a global hub of traditional medicine.
2. Allopathy is one of the process of treatment which is being promoted by AEPC.
3. It works under Ministry of Commerce & Industry, DGFT, Export Promotion Councils

Options:

- A. 1 and 2 only
- B. 2 and 3 only
- C. 1 and 3 only
- D. All of the above

Ans: B

Explanation: AYUSHEPC (Ayush Export Promotion Council) (PIB)

- **Administrative Ministry: Ministry of AYUSH**
- **Objective**
- Promote **exports** of AYUSH products & services: Ayurveda, Yoga, Naturopathy, Unani, Siddha, Homoeopathy
 - Position India as a **global hub of traditional medicine**
- **Functions**
 - Facilitate **market access** for Indian AYUSH products abroad
 - Organise: International trade fairs & exhibitions, Buyer–seller meets, Support exporters in:
 - Regulatory compliance of importing countries
 - Quality certification & standards
 - Branding of “**AYUSH products of India**”
- **Coverage-** AYUSH medicines, Herbal & plant-based products, Wellness services (Ayurveda hospitals, yoga therapy, etc.)
- **Role in Export Ecosystem-** Works in coordination with: **Ministry of Commerce & Industry, DGFT, Export Promotion Councils**



Q39. Which of the following statements about White dwarf is/are incorrect:

1. It forms as a star like the Sun exhausts its nuclear fuel.
2. The density of white dwarf is comparable to Uranus.

Options:

- A. Only 1
- B. Only 2
- C. Both of the above

D. None of the above

Ans: A

Explanation: White dwarf: A white dwarf system typically consists of a white dwarf—the dense, Earth-sized remnant of a Sun-like star—often paired with a companion star in a binary arrangement.

- Forms as a star like the Sun exhausts its nuclear fuel, sheds its outer layers as a planetary nebula, and leaves behind a hot, compact core—the white dwarf.
- In a binary system, the white dwarf's gravity pulls gas from its companion star.
- **Key Physical Features**
 - **Mass:** ~0.17–1.4 solar masses
 - **Size:** Comparable to **Earth**
 - **Density:** Extremely high ($\approx 10^6$ – 10^9 g/cm³)
 - **Upper mass limit: Chandrasekhar Limit = 1.4 solar masses**

Q40. Which of the following statements regarding Bio-bitumen is/are correct:

1. It is bio-based alternative to conventional petroleum bitumen
2. It is used mainly in road construction and waterproofing
3. India has become the first country to commercially produce bio-bitumen for road construction, marking a global milestone in green infrastructure

Options:

- A. 1 and 2 only
- B. 2 and 3 only
- C. 1 and 3 only
- D. All of the above

Ans: D

Explanation: Bio-based alternative to conventional petroleum bitumen

- Derived from **renewable biological sources** instead of crude oil
- Used mainly in **road construction** and **waterproofing**
- **Raw Materials / Sources**
 - Lignin (from paper & pulp industry)
 - Vegetable oils (soybean, rapeseed, etc.)
 - Waste cooking oil
 - Algae biomass
 - Agricultural & forestry residues
- **Key Characteristics**
 - **Lower carbon footprint** than petroleum bitumen
 - Comparable **binding and adhesive properties**
 - Better **temperature flexibility** (less cracking)
 - Partial or full replacement of fossil bitumen possible
- **Context:** India has become the first country to commercially produce bio-bitumen for road construction, marking a global milestone in green infrastructure.
- **Key features of bio-bitumen:**



- Partial fossil replacement.
- Environment-friendly
- Cost-efficient
- **Manufacturing process (Bio-bitumen via pyrolysis):**
 - Collection of farm residue
 - Pyrolysis
 - Bio-oil extraction
 - Blending
 - Quality validation

Q41. Consider the following statements about ONDC:

1. It is under the Ministry of Commerce & Industry.
2. It is backed by DPIIT, Public & private stakeholders.

How many of these statements is/are correct?

- A. Only 1
- B. Only 2
- C. Both of the above
- D. None of the above

Ans: C

Explanation: ONDC (Open Network for Digital Commerce)

- **Nature: Non-profit company**
- **Parent Ministry: Ministry of Commerce & Industry**
- **Model:** Open, interoperable digital network (not a platform)
- **Objective**
 - Democratise digital commerce
 - Break platform monopolies
 - Enable **MSMEs, kirana stores & small sellers** to participate in e-commerce
 - Reduce high commissions charged by dominant platforms
- **Key Features**
 - **Open protocol-based network** (similar philosophy to UPI)
 - **Interoperability:** Buyer and seller apps can be different
- **Governance & Structure**
 - Incorporated as **Section 8 company**
 - **Advisory Council & Board of Directors**
 - **Backed by:** DPIIT, Public & private stakeholders (banks, tech firms, logistics)
- **Context:** Online ticket booking for 170+ centrally protected monuments and museums has been enabled by the Archaeological Survey of India (ASI) on the Open Network for Digital Commerce (ONDC) platform.



Q42. Which of the following statements about Scramjet is/are correct?

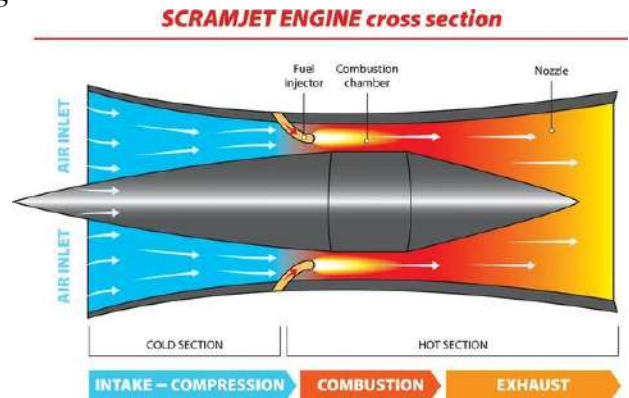
1. Scramjet engines operate at **hypersonic speeds**.
2. The technology is suitable for space access vehicles and missiles.
3. Poor fuel efficiency in this technology makes it unreliable for long flights.

Options:

- A. 1 and 2 only
- B. 2 and 3 only
- C. 1 only
- D. All of the above

Ans: A**Explanation: Scramjet**

- **Type:** Air-breathing hypersonic propulsion engine
- **Full Form:** Supersonic Combustion Ramjet
- **Key Features**
 - Operates at **hypersonic speeds (Mach 5 to Mach 15)**
 - **No rotating parts** (unlike turbojet/turbofan engines)
 - **Combustion occurs at supersonic speed** inside the engine
 - Uses **atmospheric oxygen** → no onboard oxidizer required
 - Highly **fuel-efficient** for long-range hypersonic flight
- **Working Principle**
 - Incoming air is compressed due to **high forward speed of the vehicle**
 - Air enters the combustor **without being slowed to subsonic speed**
 - Fuel (usually **hydrogen**) is injected and ignited
 - High-velocity exhaust produces thrust



Q43. Which of the following statements about International Solar Alliance is/are correct?

1. It is an intergovernmental treaty-based international organization launched at COP21.
2. It was Jointly launched by India and UK.
3. Membership is open to all UN member countries.

Options:

- A. 1 and 2 only
- B. 2 and 3 only
- C. 1 and 3 only
- D. All of the above

Ans: C

Explanation: Intergovernmental treaty-based international organization

- **Launch:** 2015 (Paris Climate Conference – COP21)
- **Founded by:** India and France
- **Legal Status:** Became a treaty-based organization in 2017
- **Objective**



- Promote **solar energy deployment** globally
- Reduce dependence on **fossil fuels**
- Mobilise finance, technology, and capacity building for solar projects
- Support **climate action and SDGs**, especially for Global South
- **Membership:** Open to all **UN member countries** (after 2018 amendment)
- **Headquarters-** Gurugram, Haryana, India
- **Key Initiatives / Programs**
 - **One Sun One World One Grid (OSOWOG)** – global solar grid vision
 - **Solar Risk Mitigation Initiative (SRMI)**
 - **Solar Mini-Grids & Rooftop Solar Programs**
 - **STAR-C** (Solar Technology and Application Resource Centres)
 - **SolarX Challenge**
- **Governance Structure**
 - **Assembly:** Supreme decision-making body (all members)
 - **Secretariat:** Located in Gurugram
 - **Director General:** Head of Secretariat
 - **Standing Committees:** Finance, Program, Partnership
- **Funding**
 - Voluntary contributions from member countries
 - Multilateral development banks (World Bank, ADB, etc.)
 - Private sector participation encouraged
- **Recently, USA has pulled out of the ISA**

Q44. Which of the following statements about Spina Bifida is/are incorrect:

1. Occurs due to incomplete closure of neural tube during early pregnancy.
2. It is non-communicable, non-infectious birth defect

Options:

- A. Only 1
- B. Only 2
- C. Both of the above
- D. None of the above

Ans: D

Explanation:

- **Type:** Congenital birth defect
- **Category:** **Neural Tube Defect (NTD)**
- **Occurs due to:** **Incomplete closure of neural tube** during early pregnancy
- **Critical period:** **First 28 days of pregnancy**
- **What Happens?**
 - The **spinal cord, nerves, or meninges** do not develop properly
 - May cause **exposed spinal cord** or vertebral defects
- **Nature of condition:**
 - Non-communicable, non-infectious birth defect
 - Occurs due to abnormal closure of the neural tube in the first 28 days after conception

- Strongly linked to maternal folate deficiency
- **Causes:**
 - Inadequate folic acid intake before and during early pregnancy (primary cause)
 - Poor maternal nutrition and anaemia
 - Unplanned pregnancies without micronutrient supplementation
 - Possible genetic susceptibility combined with environmental factors

Q45. Which of the following statements regarding PANKHUDI Portal is/are correct:

1. A single-window integrated digital platform to facilitate voluntary and institutional contributions towards elderly.
2. It serves as a CSR (Corporate Social Responsibility) and partnership facilitation portal bringing together multiple stakeholders.
3. Nutrition & health, protection & rehabilitation are some of the initiatives of the portal.

Options:

- A. 1 and 2 only
- B. 2 and 3 only
- C. 1 and 3 only
- D. All of the above

Ans: B

Explanation:

- *Platform for Partnerships, Knowledge, and Holistic Development Initiatives* (official branded name) — **PANKHUDI** portal.
- **Launched On: 8 January 2026** by the **Ministry of Women and Child Development**.
- A **single-window integrated digital platform** to facilitate **voluntary and institutional contributions** towards women and child development initiatives.
- It serves as a **CSR (Corporate Social Responsibility)** and partnership facilitation portal bringing together multiple stakeholders.
- **Focus Areas**
- **The portal covers initiatives related to:** Nutrition & health, Early Childhood Care & Education (ECCE), Child welfare, protection & rehabilitation, Women's safety and empowerment.
- **Associated Flagship Missions**



It supports flagship programmes such as: Mission Saksham Anganwadi & Poshan 2.0, Mission Vatsalya, Mission Shakti

Q46. Consider the following statements about EOS-N1 (Anvesha):

1. It will help in space-based surveillance and reconnaissance capabilities while supporting civil applications.
2. It is placed on Sun synchronous orbit.

How many of these statements is/are correct?

- A. Only 1

- B. Only 2
- C. Both of the above
- D. None of the above

Ans: A

Explanation:

- **Full Name:** Earth Observation Satellite – N1, **Nickname:** Anvesha
- **Agency:** ISRO
- **Category:** Earth Observation / Surveillance satellite
- **Purpose**
 - To enhance space-based surveillance and reconnaissance capabilities while supporting civil applications such as agriculture, urban planning, and environmental monitoring.
- **Orbit:** Low Earth Orbit (LEO)



Q47. Which of the following statements regarding Kashmir Markhor is/are incorrect?

1. The name “markhor” comes from Persian meaning “snake-killer”, based on ancient folklore.
2. IUCN conservation status of Kashmir Markhor is Endangered.

Options:

- A. Only 1
- B. Only 2
- C. Both of the above
- D. None of the above

Ans: B

Explanation: Kashmir Markhor

- A wild mountain goat.
- The name “markhor” comes from Persian meaning “snake-killer”, based on ancient folklore.
- **Distribution:** Found in **Jammu & Kashmir** and parts of **northern Pakistan**
 - In India, mainly in **Pir Panjal range** and **Kashmir Himalayas**
 - **High-altitude mountainous terrain** (2,000–4,000 m)
 - Rocky slopes, alpine scrub forests
- **Distinctive feature:** Large, **spiral corkscrew-shaped horns** (more prominent in males)
- **Conservation status:**
 - **IUCN Red List:** *Near Threatened*
 - **Wildlife (Protection) Act, 1972:** **Schedule I**
 - **CITES:** Appendix I (highest protection against international trade)
- **State symbol:** Declared the **State Animal of Jammu & Kashmir** (after reorganisation)



Q48. Consider the following statements regarding Zehanpora stupas:

1. It is an ancient Buddhist site of Kushan age on the banks of Indus.
2. This Buddhist architecture has influence of Gandhara Buddhist cultural sphere.

3. In Buddhist architecture Chaityas are prayer halls.

How many of these statements is/are correct?

- A. 1 and 2 Only
- B. 1 and 3 Only
- C. All of the above
- D. 2 and 3 only

Ans: D

Explanation: Zehanpora stupas

- **Zehanpora** is a village in **Baramulla district, Jammu & Kashmir** (on the Jhelum River) where ancient Buddhist remains have been found.
- The site contains **2,000-year-old Buddhist structures** dating mainly to the **Kushan period** (1st–3rd century CE).
- **Stupas:** Several stupa mounds (Buddhist shrine bases).
- **Monastic structures:** Foundations indicating **viharas (monasteries)** and **chaityas (prayer halls)**.
- **Artefacts:** Pottery shards, copper objects, and stone walls from the Kushan era.
- **Significance**
 - **Rewrites history of Kashmir's past:** Demonstrates that Kashmir was a centre of Buddhist activity and learning.
 - **Gandhara links:** Architectural features and location along ancient Silk Road routes suggest connections with the **Gandhara Buddhist cultural sphere**.
 - **Cultural continuity:** Confirms Buddhism's deep roots in the region alongside other traditions.



Q49. Which of the following statements about Bhairav Battalion is/are incorrect:

1. It is newly-raised elite light combat/commando battalion of the Indian Army.
2. It is raised to fill the capability gap between regular infantry and elite Para-Special Forces.

Options:

- A. Only 1
- B. Only 2
- C. Both of the above
- D. None of the above

Ans: D

Explanation: Bhairav Battalion

- A newly-raised **elite light combat/commando battalion of the Indian Army** designed for **rapid, high-impact tactical operations**.
- Evolved to meet **modern warfare demands** (fast strikes, deep reconnaissance, hybrid threats like drones and electronic warfare).
- Fills the capability gap **between regular**



infantry and elite Para-Special Forces.

- Each battalion has roughly **200–250 specially trained soldiers**.
- Personnel are drawn from infantry and **support arms** (artillery, signals, air defence) for **multi-domain operation ability**.
- Training includes **rapid maneuver, deep strikes, surveillance, drone usage, tactical flexibility**.
- Operates as a **lean, mobile force** capable of independent action on short notice.
- Intended for **quick reaction and limited offensive/defensive tasks** along sensitive borders (China, Pakistan sectors).
- Around **15 battalions already raised** with plans to expand to **upwards of ~25 battalions** by mid-2026.

Q50. Which of the following statements regarding Dust EXperiment (DEX) is/are correct:

1. Dex is India's first indigenous space dust detector/instrument
2. The experiment improves understanding of the near-Earth space dust environment.

Options:

- A. Only 1
- B. Only 2
- C. Both of the above
- D. None of the above

Ans: C

Explanation:

- **Dust EXperiment (DEX)** is **India's first indigenous space dust detector/instrument** developed to measure tiny particles from space known as **Interplanetary Dust Particles (IDPs)**.
- Designed and built by the **Physical Research Laboratory (PRL), Ahmedabad** for the **Indian Space Research Organisation (ISRO)**.
- **Aim:** To detect and measure **microscopic high-speed dust particles (IDPs)** originating from **comets, asteroids and meteoroids** that constantly bombard Earth's atmosphere.
 - Helps understand the **space dust environment**, which is important for **spacecraft safety, space weather studies** and future **manned deep space missions**.
- DEX was flown on **PSLV-C58** as part of the **XPoSat mission** (on POEM) launched on **1 January 2024**.
- **Significance**
- **Space environment research:** Improves understanding of the near-Earth space dust environment.
- **Satellite & mission safety:** Helps assess hazards to satellites and future human missions (e.g., **Gaganyaan, Moon/Mars**) due to dust impacts.
- **Planetary science:** Blueprint for similar instruments to study dust around **Venus, Mars, Moon** and other bodies.

Q51. Consider the following statements regarding source code:

1. Source code is the human-readable set of instructions written by programmers to create software.
2. Open-Source code is publicly inaccessible and can't be used, modified, and redistributed.
3. India encourages Open source code through Digital Public Infrastructure.

How many of these statements is/are correct?

- A. 1 and 2 Only
- B. 2 and 3 Only
- C. All of the above
- D. 1 and 3 only

Ans: D

Explanation: Source code is the **human-readable set of instructions** written by programmers to create software, applications, or operating systems.

- **Languages used:** Written in **high-level programming languages** such as C, C++, Java, Python, JavaScript, etc.
- **Conversion:** It must be **compiled or interpreted** into machine code (binary) for execution by computers.
- **Types:**
 - **Open-source code:** Source code is publicly accessible and can be **used, modified, and redistributed** (e.g., Linux, Apache, Mozilla Firefox).
 - **Proprietary/Closed source code:** Source code is **restricted** and owned by an individual or company (e.g., Windows, macOS).
- **Licensing:** Governed by licenses like **GPL, MIT, Apache License**, etc.
- **Governance relevance:** Many governments promote **open-source software (OSS)** for **digital sovereignty, cost reduction, and data security**.
 - India encourages OSS through **Digital Public Infrastructure (DPI)** and **MeitY policies**.

Surveillance tools

The Indian Telecom Security Assurance Requirements propose 83 security standards including **source code disclosure** for smartphone manufactures in Indian markets



Gray area: Tech companies say the proposal lacks any global precedent.

■ **Background permission restriction:** Apps cannot access cameras, microphones or location services in the background when phones are inactive

■ **One-year log retention:** Devices must store security audit logs for 12 months

■ **Informing govt. of major updates:** Phone makers must notify a govt. body before releasing any major updates or security patches

Q52. Which of the following statements is/are incorrect regarding Nipah Virus (NiV)?

1. Fruit bats are reservoir of NiV.
2. NiV causes acute encephalitis and severe respiratory illness

Options:

- A. Only 1
- B. Only 2
- C. Both of the above
- D. None of the above

Ans: D

Explanation: **Natural reservoir: Fruit bats (Pteropus species)** – also called *flying foxes*

- **Name derived from: Sungai Nipah village, Malaysia**
- **Transmission**

- **Animal to human:** Contact with infected bats or pigs
- **Human to human:** Through **bodily fluids**, respiratory droplets
- **Food-borne:** Consumption of **contaminated fruits or raw date palm sap**
- Causes **acute encephalitis** and **severe respiratory illness**
- **Case Fatality Rate (CFR): 40–75%** (very high)
- **Symptoms**
 - Fever, headache, dizziness
 - Acute respiratory distress
 - Encephalitis → coma, death in severe cases
- **Treatment & Prevention**
 - **No specific antiviral drug or licensed vaccine** (as of now)
 - Supportive care is the mainstay

Q53. Consider the following statements regarding PSLV

1. It is a four stage launch vehicle with 2 solid stage and 2 liquid stage.
2. Last time PSLV failed to complete a mission was in 2016.
3. It is one of the most reliable launch vehicles globally.

How many of these statements is/are correct?

- A. 1 and 2 Only
- B. 1 and 3 Only
- C. All of the above
- D. 2 and 3 only

Ans: B

Explanation: Polar Satellite Launch Vehicle

- **Developed by:** ISRO
- **Purpose & Orbits**
 - Primarily designed to place satellites into **Polar Sun-Synchronous Orbit (SSO)**
 - Also capable of launching satellites into **Low Earth Orbit (LEO)**, **Medium Earth Orbit (MEO)** and **Geosynchronous Transfer Orbit (GTO)**
- **Technical Features**
 - **Four-stage launch vehicle**
 - **1st stage:** Solid propulsion (largest solid booster used by ISRO)
 - **2nd stage:** Liquid propulsion (Vikas engine)
 - **3rd stage:** Solid propulsion
 - **4th stage:** Liquid propulsion (twin engines for precise orbital injection)
 - **Strap-on boosters:** Up to **6 solid strap-ons** for enhanced thrust
- **Payload Capacity:** ~1,750 kg to Sun-Synchronous Orbit (SSO)
- **Key Achievements**
 - Launched **Chandrayaan-1, Mars Orbiter Mission (Mangalyaan)**
 - Launched **104 satellites** in a single mission (PSLV-C37)
- One of the **most reliable launch vehicles globally**
- **Failures:** Four outright failures and one partial failure. Last 2 failures occurred in less than a span of one year.

Q54. Which of the following statements about Bhoomi project is incorrect:

1. It is an initiative of West Bengal government.
2. It is integrated with National Land Records Modernization Programme (NLRMP).

Options:

- A. Only 1
- B. Only 2
- C. Both of the above
- D. None of the above

Ans: A

Explanation: Launched by: Government of Karnataka

- **Department:** Department of Revenue, Karnataka
- **Nature:** Land Records Digitisation & e-Governance Project
- **Objectives**
 - Computerisation of **Record of Rights, Tenancy and Crops (RTC)**
 - Ensure **transparency, accuracy, and easy access** to land records
 - Reduce **corruption, litigation, and discretion of officials**
- Integrated with **National Land Records Modernization Programme (NLRMP)**
- Supports **SVAMITVA scheme** (for rural property ownership clarity)
- Basis for **Digital India Land Records Modernization Programme (DILRMP)**
- The initiative has completed 25 years recently.

Q55. Which of the following statements is/are correct:

1. Kathputli is a traditional string puppetry of Odisha region.
2. It narrates **folk tales, ballads**, heroic stories of **Rajput warriors**

Options:

- A. Only 1
- B. Only 2
- C. Both of the above
- D. None of the above

Ans: B

Explanation: Art form: Traditional string puppetry

- **Region:** Rajasthan (especially Jaipur, Nagaur, Churu)
- **Etymology:** *Kath* = wood, *Putli* = doll
- **Historical Background**
 - One of **India's oldest forms** of puppetry
 - Roots trace back to **medieval Rajasthan**
 - Patronised by **Rajput rulers**
- **Key Features**
 - Puppets made of **wood**, with **cotton stuffing**
 - **Single string or multiple strings** tied to the head
 - No legs – long flowing skirts give illusion of movement
 - **Bright costumes**, heavy jewellery, stylised makeup
- Narrates **folk tales, ballads**, heroic stories of **Rajput warriors**
- Use of **high-pitched voice**, rhythmic dialogues

- **Music & Instruments-** Live music accompaniment
- **Prelims Comparison Point**
 - **Kathputli** → String puppetry (Rajasthan)
 - **Bommalattam** → String puppetry (Tamil Nadu)
 - **Tholu Bommalata** → Shadow puppetry (Andhra Pradesh)
 - **Putul Nach** → Rod puppetry (West Bengal)

Q56. Consider the following statements regarding *Orobanche aegyptiaca*:

1. It is a parasitic flowering plant.
2. It Attaches to host roots using **haustoria** to extract water and nutrients
3. It has a symbiotic relation with the host plant.

How many of these statements is/are correct?

- A. Only one statement is correct
- B. Only 2 statements are correct
- C. All the statements are correct
- D. None of the statements are correct

Ans: B

Explanation:

- **Common name: Egyptian broomrape**
- **Type: Parasitic flowering plant**
- **Key Biological Features**
 - **Obligate root parasite** → cannot survive without a host
 - **Non-photosynthetic** (lacks chlorophyll)
 - Attaches to host roots using **haustoria** to extract water and nutrients
- **Host Crops- Tobacco, Tomato, Potato, Brinjal, Mustard etc.**
- **Agricultural Impact**
 - Causes **severe yield losses** (up to 50–70% in heavy infestation)
 - Difficult to control due to: **Tiny seeds, Long seed dormancy** (can survive in soil for many years)
- India's largest oilseed crop, mustard, is facing a major yield threat due to the rapid spread of the parasitic weed *Orobanche aegyptiaca* in Rajasthan and Haryana.

Q57. Which of the following statements is/are correct regarding Inflation targeting?

1. In India it is based on recommendation of Malhotra Committee.
2. Inflation targeting concept is based on CPI

Options:

- A. Only 1
- B. Only 2
- C. Both of the above
- D. None of the above

Ans: B

Explanation: Inflation Targeting (IT) is a **monetary policy framework** where the central bank commits to achieving a **pre-announced inflation rate** as the primary objective.

- **Adopted in India:** Formally adopted in **2016** through an amendment to the **RBI Act, 1934**.
 - Based on recommendations of the **Urjit R. Patel Committee (2014)**.
- **Target Set: CPI inflation target: 4%**
 - **Tolerance band: $\pm 2\%$ (i.e., 2%–6%)**
- Target decided by the **Central Government** in consultation with RBI (every 5 years).
- **Failure Clause:** RBI is deemed to have failed if inflation exceeds 6% or falls below 2% for **3 consecutive quarters**.
- RBI must submit a report to the Government explaining reasons, remedial actions, and timeline.
- **Why CPI (not WPI):** CPI reflects **retail inflation** and includes **food & services**, directly impacting households.
- **Objectives:**
 - Ensure **price stability**
 - Anchor **inflation expectations**
 - Support **medium-term growth** and macroeconomic stability



Q58. Consider the following statements regarding Greenland

1. It lies between Arctic Ocean and North Pacific Ocean.
2. It is not an independent nation.
3. 80% of Greenland is covered by Ice Sheet.

How many of these statements is/are correct?

- A. 1 and 2 Only
- B. 1 and 3 Only
- C. All of the above
- D. 2 and 3 only

Ans: D

Explanation: World's largest island (not a continent).

- **Autonomous territory of Denmark** (not an independent country).
- **Location:** Lies between **Arctic Ocean** and **North Atlantic Ocean**.
 - Situated **north-east of North America**.
 - Separated from Canada by **Davis Strait** and **Baffin Bay**.
- Extends **within the Arctic Circle**; experiences **Midnight Sun** and **Polar Night**.
- About **80% covered by Greenland Ice Sheet** (second largest after Antarctica).
- Ice sheet is a major contributor to **global sea-level rise** due to melting.
- Predominantly **polar climate**.
- Interior extremely cold; coastal areas slightly milder



due to ocean currents.

- Very **sparsely populated**; majority are **Inuit (Kalaallit)**.
- Part of **Kingdom of Denmark** but left the **European Economic Community (EEC)** in **1985**.

Q59. Which of the following statements about Man Portable Anti-Tank Guided Missile (MPATGM) is incorrect:

1. It is developed by BHEL and HAL jointly.
2. It's effective range is about 10 km.

Options:

- A. Only 1
- B. Only 2
- C. Both of the above
- D. None of the above

Ans: C

Explanation:

- Developed by **DRDO** in collaboration with **Indian industry**.
- **3rd Generation** Anti-Tank Guided Missile (ATGM).
- **Fire-and-Forget** system (no post-launch guidance required).
- **Man-portable**; can be carried and fired by infantry soldiers.
- Designed to replace older imported short-range ATGMs.
- **Range:** Effective range of about 4000 metres



Q60. Which of the following statements is/are correct:

1. The petro-dollar system refers to the practice of pricing and trading crude oil in US dollars in global markets.
2. In case of India oil imports require USD, decreasing pressure on forex reserves.

Options:

- A. Only 1
- B. Only 2
- C. Both of the above
- D. None of the above

Ans: A

Explanation: The **petro-dollar system** refers to the practice of **pricing and trading crude oil in US dollars** in global markets.

- **Origin:** Emerged in the **early 1970s** after the **Bretton Woods system collapsed (1971)**.
- Formalised through **US–Saudi Arabia agreement (1974)**.
- **Major Actors: OPEC countries**, especially Saudi Arabia.
- **United States** as issuer of reserve currency.
- **Impact on Global Economy:**
 - Strengthens USD as **global reserve currency**.

- Links **energy markets with global finance**.
- Increases vulnerability of oil-importing nations to **USD volatility**.
- **Impact on India:**
 - Oil imports require **USD**, increasing pressure on **forex reserves**.
 - Contributes to **imported inflation** when the dollar strengthens.
 - Affects **current account deficit (CAD)**.

Q61. Consider the following statements regarding Valley of Flowers:

1. Valley of Flowers is a famous montane type valley and national park.
2. It is a UNESCO world heritage site.
3. Valley hosts over 600 species of flowering plants, including rare/endemic species like Brahma Kamal.

How many of these statements is/are correct?

- A. Only one statement is correct
- B. Only 2 statements are correct
- C. All the statements are correct
- D. None of the statements are correct

Ans: B

Explanation: Valley of Flowers is a famous **alpine valley and national park** located in **Chamoli district, Uttarakhand** in the **Garhwal Himalayas** (not literally in Dehradun, but Dehradun is the nearest major city reference point).

- It lies at a high altitude of around **3,600 m (≈12,000 ft)** AMSL.
- **Declared a National Park in 1982**.
- Part of the **Nanda Devi and UNESCO World Heritage Site**, known for **outstanding natural beauty and biodiversity**.
- Valley hosts **over 600 species of flowering plants**, including **rare/endemic species** like **Brahma Kamal (Saussurea obvallata), Blue Poppy, Cobra Lily** and many medicinal species.
- Rich fauna includes **snow leopard, musk deer, Himalayan black bear, blue sheep, red fox**, and various birds (Himalayan monal etc.).
- **Open for tourists roughly June to October; best bloom time is July–September** (peak flowering).



Q62. Which of the following statements is/are correct regarding euthanasia?

1. In India active euthanasia is allowed.
2. In Common Cause vs Union of India (2018) case the Supreme Court has recognised Right to Die with Dignity as part of Article 21.

Options:

- A. Only 1
- B. Only 2
- C. Both of the above
- D. None of the above

Ans: B

Explanation: Withdrawal or withholding of life-sustaining treatment (e.g., ventilator, feeding tube) to allow a terminally ill patient to die naturally.

- **Nature:** Involves **omission**, not an active act to cause death.
- **Legal Status in India: Permitted under strict guidelines.**
- **Key Supreme Court Case:**
- **Common Cause vs Union of India (2018):** Recognised **Right to Die with Dignity** as part of **Article 21**.
 - Legalised passive euthanasia nationwide.
 - Validated **Living Will / Advance Medical Directive**.
- **Living Will (Advance Directive):** Written statement by a person specifying refusal of life-prolonging treatment if terminally ill or in permanent vegetative state.
 - Must be executed when the person is of **sound mind**.
- **Medical Procedure:** Decision by treating doctor + confirmation by hospital medical board.
- **Difference from Active Euthanasia:**
 - **Passive:** Withdrawal of treatment (legal).
 - **Active:** Administering lethal substance (illegal in India).
- Passive euthanasia is permitted in many countries; active euthanasia is allowed only in a few (e.g., Netherlands, Belgium).



Q63. Consider the following statements regarding BRICS

1. China is the chair for BRICS in 2026.
2. Lotus shape of BRICS logo for 2026 represents India's civilisational identity and growth from adversity.
3. The logo reflects unity among diverse cultures, economies and political systems.

How many of these statements is/are correct?

- A. 1 and 2 Only
- B. 1 and 3 Only
- C. All of the above
- D. 2 and 3 only

Ans: D

Explanation: BRICS India 2026 Logo

- The BRICS India 2026 logo is the official visual identity of India's BRICS Chairship, representing the country's vision, values and priorities for leading the grouping in 2026.
- **Chairship period:** Calendar year 2026
- **Logo Theme:** The logo is inspired by India's national flower – the Lotus, symbolising: Resilience and renewal, Unity in diversity, Spiritual and cultural harmony.
- **Key Features of the Logo:**
 - **Lotus shape:** Represents India's civilisational identity and growth from



adversity.

- **Namaste hands at the centre:** Symbolise respect, dialogue and cooperation.
- **Five coloured petals:** Represent the founding BRICS nations – Brazil, Russia, India, China and South Africa.
- **Balanced design:** Reflects unity among diverse cultures, economies and political systems.
- **Digital platform:** The accompanying BRICS India website will act as a hub for meetings, initiatives, outcomes and public engagement during India's chairship.

Q64. Which of the following statements about Shaksgam Valley is incorrect:

1. It lies to the south of Karakoram range.
2. It was illegally ceded by Pakistan to China under the Sino-Pakistan Boundary Agreement, 1963

Options:

- A. Only 1
- B. Only 2
- C. Both of the above
- D. None of the above

Ans: A

Explanation:

- Lies **north of the Karakoram Range.**
- Forms part of the **Trans-Karakoram Tract.** Between the Karakoram and Kunlun mountain ranges.
- **Political Status: Claimed by India** as part of the **Union Territory of Ladakh (Jammu & Kashmir).**
 - **Illegally ceded by Pakistan to China** under the **Sino-Pakistan Boundary Agreement, 1963.**
- **Also Known As: Trans-Karakoram Tract**
- Part of **Gilgit-Baltistan region** under Pakistan's control before 1963.
- **Bordering Regions: Borders Xinjiang (China).**
 - Lies close to **Aksai Chin** (another India-claimed but China-controlled area).
- **Strategic Importance:**
 - Strengthens **China–Pakistan strategic nexus.**
 - Close to **China–Pakistan Economic Corridor (CPEC)** region.
 - Important for **military logistics and surveillance** in the Karakoram.

Q65. Which of the following statements is/are correct regarding Responsible Nations Index (RNI):

1. It is India's third globally anchored index.
2. It assesses countries on the basis of responsible governance rather than conventional power or GDP-centric metrics.

Options:

- A. Only 1

- B. Only 2
- C. Both of the above
- D. None of the above

Ans: B

Explanation:

- The **World Intellectual Foundation (WIF)** (a global, non-partisan and sector-agnostic think tank) will launch the **Responsible Nations Index (RNI)**, **India's first globally anchored index** that evaluates countries on **responsible governance, sustainability, and global responsibility**.
- **Responsible Nations Index (RNI):** It assess countries on the basis of **responsible governance rather than conventional power or GDP-centric metrics**.
- It aims to **shift the focus from traditional power metrics to ethical governance, sustainability, and cooperation**.
- **Coverage & Data-** Covers **154 countries** worldwide.
- **Core Assessment Dimensions-** **Three broad dimensions:**
 - **Internal Responsibility** — Citizen dignity, justice, welfare, inclusivity, well-being.
 - **Environmental Responsibility** — Stewardship of natural resources, climate action, sustainability.
 - **External Responsibility** — Contribution to **peace, international cooperation, and global stability**.

Q66. Consider the following statements regarding Havana Syndrome:

1. Headache, dizziness, Nausea, fatigue etc. are symptoms of Havana Syndrome.
2. Directed energy weapons are suspected cause of this.
3. Cases of Havana syndrome is reported from Havana only.

How many of these statements is/are correct?

- A. Only one statement is correct
- B. Only 2 statements are correct
- C. All the statements are correct
- D. None of the statements are correct

Ans: B

Explanation: A set of **unexplained neurological symptoms** reported by diplomats, intelligence officials, and their families.

- **First Reported: 2016**, among **US and Canadian diplomats in Havana, Cuba**
- **Reported Symptoms:** Headache, dizziness, Nausea, fatigue, Hearing loss, tinnitus (ringing in ears), Cognitive difficulties, memory issues, Balance problems
- **Suspected Causes (Not Conclusively Proven): Directed energy weapons** (e.g., microwave or radiofrequency waves) – most discussed theory.
 - Acoustic attacks (largely ruled out). Environmental factors or stress-related causes (mass psychogenic illness).
- **Key Features:**
 - **Global spread:** Cases reported in Cuba, China, Europe, Russia, and the US.



- **No visible injuries:** Many affected showed brain-like trauma without physical impact.

Q67. Which of the following statements is/are correct regarding Dark fibre?

1. These are unconnected to electronic equipment, hence no light signals pass through it.
2. They cannot be “lit” later by installing optical transceivers and networking equipment.

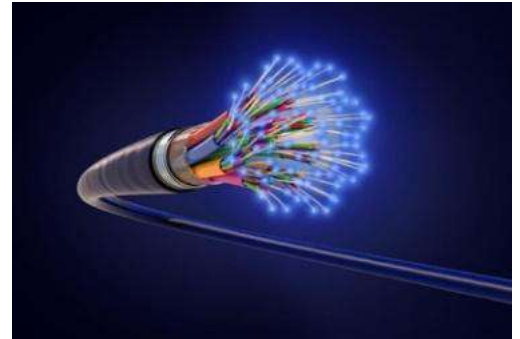
Options:

- A. Only 1
- B. Only 2
- C. Both of the above
- D. None of the above

Ans: A

Explanation: Dark fibre refers to **unused or unlit optical fibre cables** that have been laid but are **not currently in operation** (no data transmission).

- **Why “Dark”:** Term comes from the fibre being **unconnected to electronic equipment**, hence no light signals pass through it.
- **Activation:** Can be “lit” later by installing **optical transceivers and networking equipment**, enabling high-speed data transfer.
- **Difference from Lit Fibre:** *Lit fibre:* active fibre providing bandwidth as a service



Q68. Consider the following statements regarding Kuki-zo tribe:

1. They belong to the Tibeto-Burman language family.
2. They are confined into hills of Manipur.
3. Traditionally they are dependent on shifting cultivation (jhum).

How many of these statements is/are correct?

- A. 1 and 2 Only
- B. 1 and 3 Only
- C. All of the above
- D. 2 and 3 only

Ans: B

Explanation: Kuki-Zo refers to a **group of closely related tribal communities** sharing common ethnic, cultural and linguistic roots.

- **Ethno-linguistic Group:** Belong to the **Tibeto-Burman language family**.
- **Geographical Distribution:** Primarily in **Manipur** (hill districts like Churachandpur, Kangpokpi, Tengnoupal)
 - Also found in **Mizoram, Assam, Nagaland**
 - Extend across international borders into **Myanmar and Bangladesh**
- **Livelihood:** Traditionally dependent on **shifting cultivation (jhum)**
 - Increasing shift towards settled agriculture, education and services
- Recognised as **Scheduled Tribes (STs)** under the Indian Constitution (various sub-



groups notified separately)

Q69. Which of the following statements about Simlipal National Park is incorrect:

1. It is located on the Western Ghats in mayurbhanj.
2. The national park is inhabited by **Santhal, Ho, Munda and Bathudi** tribes

Options:

- A. Only 1
- B. Only 2
- C. Both of the above
- D. None of the above

Ans: A

Explanation: Location: Mayurbhanj district, Odisha

- **Part of: Eastern Ghats** (not Western Ghats)
- Declared **National Park** in 1980
- Notified as **Tiger Reserve** under Project Tiger (1973)
- Included in **UNESCO World Network of Biosphere Reserves** (2009)
- **Landscape:** Undulating terrain, plateaus and hills
 - Dense **sal and moist deciduous forests**
- **Rivers:** Origin of major rivers like **Budhabalanga, Baitarani and Subarnarekha**

Q70. Which of the following statements is/are correct regarding Export Preparedness Index:

1. It is launched to assess the export readiness and performance of Indian States & UTs.
2. The 2024 index Introduced new dimensions such as macroeconomic stability, cost competitiveness, MSME ecosystem, and financial access.

Options:

- A. Only 1
- B. Only 2
- C. Both of the above
- D. None of the above

Ans: C

Explanation: Export Preparedness Index

- **Released by: NITI Aayog**
- **First Launched: 2020**
- **Purpose:** To assess the **export readiness and performance of Indian States & UTs**
 - Encourages **competitive and cooperative federalism**
- UTs evaluated separately due to structural differences
- **Key Objective:** Identify **strengths, weaknesses and gaps** in export ecosystem
 - Help states formulate **data-driven export policies**
- **Major Pillars (4):**
- **Key Features of EPI 2024:**
 - Introduces new dimensions such as macroeconomic stability, cost competitiveness, MSME ecosystem, and financial access.
 - Uses official data from Central Ministries, State Governments and public

institutions.

- States and UTs are classified as Leaders, Challengers, and Aspirers.
- Strong focus on districts as the real units of export competitiveness.
- Helps in cluster-based, place-based and value-chain driven export strategies.
- **Top Performing States & UTs (EPI 2024):**
- **Large States:** Maharashtra, Tamil Nadu, Gujarat etc.
- **Small States / North-East / UTs:** Uttarakhand, Jammu & Kashmir, Nagaland etc.

Q71. Consider the following:

Pongal	Odisha
Makar Sankranti	Tamil Nadu
<u>Kicheri</u>	Gujarat
Magh Bihu	Assam
Poush Sankranti	West Bengal

How many of these pairs is/are correct?

- A. Only 2 pairs
- B. Only 3 pairs
- C. Only 5 pairs
- D. All of them

Ans: A

Explanation:



Q72. Which of the following statements is/are correct regarding Kruger National Park?

1. It is located in the South western parts of Namibia.
2. The park is famous for the “Big Five”: Lion, Leopard, Elephant, Rhinoceros, Buffalo

Options:

- A. Only 1
- B. Only 2
- C. Both of the above
- D. None of the above

Ans: B**Explanation:**

- **Location:** Northeastern **South Africa** (provinces of **Limpopo** and **Mpumalanga**)
- **Named after:** **Paul Kruger**, former President of Transvaal
- **Ecological Significance**
 - Part of the **Great Limpopo Transfrontier Park** (with **Mozambique** and **Zimbabwe**)
 - Represents **savanna ecosystem** (grasslands, woodlands, riverine forests)
- **Flora & Fauna**
 - Famous for the “**Big Five**”: **Lion, Leopard, Elephant, Rhinoceros, Buffalo**
 - Hosts **500+ bird species**, ~150 mammals, ~110 reptiles
 - Important populations of **African elephant** and **white & black rhinos**
 - Major rivers flowing through/along the park: **Limpopo, Sabie, Olifants, Crocodile**

**Q73. Consider the following statements regarding Tirukkural:**

1. It is considered as Tamil veda.
2. Thiruvalluvar a Tamil poet is the author.
3. It highlights polity, governance, social codes but the text is not secular in nature.

How many of these statements is/are correct?

- A. 1 and 2 Only
- B. 1 and 3 Only
- C. All of the above
- D. 2 and 3 only

Ans: A**Explanation:** Thiruvalluvar (Tamil poet–philosopher)

- **Period:** Traditionally dated around **300 BCE – 1st century CE** (Sangam age context)
- **Language:** Classical **Tamil**
- **Nature of text:** Didactic work on ethics, morality, polity and personal life
- **Structure**
- Comprises **1,330 couplets (kural)**
- Each kural has **2 lines** (7 words in total – 4 + 3)
- Divided into **3 Books (Iyal):**
- **Aram** – Virtue/Dharma (380 couplets)



- **Porul** – Wealth/Polity/Statecraft (700 couplets)
- **Inbam (Kamam)** – Love (250 couplets)
- **Key Features**
 - Secular in nature; does **not promote any single religion**
 - Emphasizes **ethical governance, justice, compassion, and self-discipline**
 - Advocates ideals like **non-violence (Ahimsa)**, truth, and righteous conduct
 - Applicable to **both rulers and common people**
- **Polity & Governance**
 - Highlights duties of **king**, ministers, army, treasury and diplomacy
 - Stresses **just rule, welfare of subjects, and moral leadership**
 - Condemns tyranny and unjust taxation
- Considered the “**Tamil Veda**”

Q74. Which of the following statements about Unified Pension Scheme is incorrect:

1. Employees completing 25 years of service receive a pension equal to 50% of average basic pay drawn in the last 12 months before retirement.
2. The pension amount would be linked to inflation.

Options:

- A. Only 1
- B. Only 2
- C. Both of the above
- D. None of the above

Ans: D

Explanation: Unified Pension Scheme (UPS) is a new pension framework introduced by the **Government of India** for **central government employees**. It offers **assured pension benefits** and addresses concerns with the earlier **National Pension System (NPS)** by incorporating guaranteed payouts.

- UPS is designed to provide **predictability, assured pensions, minimum pension guarantees, and family pension benefits** while retaining a **contributory structure**. It blends desirable features of the old and new pension systems.
- **Key Features**
 - **Assured Pension-** Employees completing **25 years of service** receive a pension equal to **50% of average basic pay** drawn in the **last 12 months** before retirement.
 - **Proportionate Payout-** Employees with **10–25 years of service** get a **proportionate pension** based on service length.
 - **Family Pension-** Upon the employee’s death, the **legally wedded spouse** receives **60%** of the pension the employee was drawing.
 - **Inflation-linked-** Pension (including family pension) is subject to **dearness relief** based on inflation indices, protecting retirees from rising costs.



Q75. Which of the following statements is/are correct regarding Army Day:

1. The day commemorates Field Marshal K. M. Cariappa taking over as the first Indian Commander-in-Chief of the Indian Army in 1949.
2. Delhi is the fixed venue for the yearly Army Day parade.

Options:

- A. Only 1
- B. Only 2
- C. Both of the above
- D. None of the above

Ans: A

Explanation: Significance: Commemorates the day **Field Marshal K. M. Cariappa** took over as the **first Indian Commander-in-Chief of the Indian Army in 1949.**

- **Historical Background**
 - Before 1949, the Indian Army was headed by **British officers**
 - Army Day marks **complete Indianisation of Army leadership**
- **Historic Venue:** This was the **4th Army Day Parade held outside Delhi**, following events in Bengaluru (2023), Lucknow (2024), and Pune (2025), Jaipur (2026) and marked the first instance it was organised outside a cantonment.



Q76. Consider the following regarding Polymetallic Nodules:

1. Potato-shaped and found at surface level of ocean water.
2. Manganese is the major component in these nodules.
3. India is a “Pioneer Investor” recognized by the International Seabed Authority (ISA)

How many of these pairs is/are correct?

- A. Only I statement is correct
- B. Only II statements are correct
- C. All of the statements are correct
- D. All are incorrect

Ans: B

Explanation: Rock-like **concretions rich in metals** found on the **deep ocean floor.**

- **Also known as manganese nodules**
- **Depth:** Found at **4,000–6,000 metres** below sea level
- **Shape & Size:** Potato-shaped; few **mm to ~20 cm** in diameter
- **Metal Content:** **Manganese (Mn)** – major component, **Nickel (Ni), Cobalt (Co), Copper (Cu)**, Trace amounts of **rare earth elements**
- **Major Locations**
 - **Clarion–Clipperton Zone (CCZ)** – Pacific Ocean (largest reserve)



- **Central Indian Ocean Basin (CIOB)**
- Parts of **Atlantic and Indian Oceans**
- **Formation**
 - Formed by **very slow precipitation** of metals from seawater
 - Growth rate: **a few millimetres per million years**
- **India & Polymetallic Nodules**
 - India is a **“Pioneer Investor”** recognized by the **International Seabed Authority (ISA)**
 - India has been allocated **75,000 sq km** in the **Central Indian Ocean Basin**

Q77. Which of the following statements is/are incorrect regarding *BRICS Plus naval exercise*?

1. It is being hosted by India in the Andaman Sea.
2. It enhances maritime security, interoperability, and joint operations.

Options:

- A. Only 1
- B. Only 2
- C. Both of the above
- D. None of the above

Ans: A

Explanation: A multinational naval exercise held under the wider *BRICS Plus* format, involving selected BRICS members and partner countries to conduct joint maritime drills focused on **security of key sea routes and maritime cooperation**.

- **Name of the 2026 edition: “Will for Peace 2026”** (week-long exercise off South African waters).
- **Hosted by:** South Africa (conducted off **Simon’s Town**, near Cape Town).
- **Format:** Part of **BRICS Plus** cooperation (BRICS expanded outreach beyond core members).
- **Objective:**
 - Enhance **maritime security, interoperability, and joint operations**
 - Ensure **safety of shipping lanes** and support **maritime economic activities**.



Q78. Consider the following statements regarding High Seas Treaty:

1. It is yet to come into force as only 50 countries have ratified the treaty.
2. Conservation and sustainable use of marine biodiversity in high seas is one of the primary goals.
3. Conference of Parties (COP) is the decision-making body.

How many of these statements is/are correct?

- A. 1 and 2 Only
- B. 1 and 3 Only
- C. All of the above
- D. 2 and 3 only

Ans: D

Explanation: Adopted: March 2023 by the United Nations

- **Opened for Signature:** September 2023 at the UN General Assembly
- **Came into Force:** *Recently came into force as 60 nations have ratified this.*
- **What are High Seas?**
 - Areas of the ocean **beyond 200 nautical miles** from coastal states
 - Constitute **~64% of ocean surface** and **~95% of ocean volume**
 - Not under the jurisdiction of any single country
- **Key Objectives**
 - Conservation and sustainable use of **marine biodiversity** in high seas
 - Address governance gaps in areas beyond national jurisdiction
- **Institutional Mechanism- Conference of Parties (COP)** – decision-making body
- India **signed** the High Seas Treaty

Q79. Which of the following statements about Chips to Start-up (C2S) Programme is/are correct:

1. It is under the Ministry of Science and Technology.
2. It aims to reduce India's dependence on imported semiconductor IP.

Options:

- A. Only 1
- B. Only 2
- C. Both of the above
- D. None of the above

Ans: B

Explanation: Ministry of Electronics & Information Technology (MeitY), Government of India

- **Nature:** *National programme for semiconductor design & innovation*
- **Objective**
 - Create an ecosystem for **semiconductor chip design** in India
 - Enable **start-ups, MSMEs, students and academia** to design chips
 - Reduce India's dependence on imported semiconductor IP
- **Key Components**
 - **Design Infrastructure Support**
 - Foundry support for fabrication
 - Packaging, testing & validation facilities

Q80. Which of the following statements is/are incorrect regarding Open-sea Marine Fish Farming in Andaman Sea Project:

1. Ministry of Earth Sciences (MoES) & National Institute of Ocean Technology (NIOT) are implementing agency.
2. It promotes open-sea cage aquaculture for high-value marine fish

Options:

- A. Only 1
- B. Only 2
- C. Both of the above
- D. None of the above

Ans: C**Explanation:**

- India has launched its first open-sea marine fish farming project in the Andaman Sea, marking a major step in advancing the Blue Economy through science-led, livelihood-oriented utilisation of ocean resources.
- **Implementing agencies-** Ministry of Earth Sciences (MoES) & National Institute of Ocean Technology (NIOT).
- **Implemented by: ICAR–Central Marine Fisheries Research Institute (CMFRI)** in collaboration with **Andaman & Nicobar Administration**
- **Located in**
 - North Bay, near Sri Vijaya Puram, Andaman Sea.
 - Union Territory of Andaman & Nicobar Islands.
- **Aim:** To unlock ocean-based economic potential, generate sustainable coastal livelihoods, and build technical feasibility for scaling open-sea aquaculture under India's Blue Economy vision.

**Q81. Consider the following statements crustaceans:**

1. Indiaphonte bijoyi has been discovered in the Gulf of Mexico.
2. Crab, Lobster, Shrimp are example of microscopic crustaceans.
3. They have antennae-like structures at the front; specialised limbs adapted for sediment life.

Choose the correct option:

- A. Only one statement is incorrect
- B. Only 2 statements are incorrect
- C. All the statements are incorrect
- D. None of the above

Ans: A

Explanation: A microscopic crustacean discovered in the Kavaratti lagoon, Lakshadweep, has been formally established as a new genus and species, named *Indiaphonte bijoyi*.

- Belonging to the family Laophontidae under the order Harpacticoida. It is part of meiofauna—tiny invertebrates (less than 1 mm) that live within aquatic sediments and are visible only under a microscope.
- **Key characteristics:**



- **Size:** ~518–772 micrometres; females slightly larger than males.
- **Body:** Semi-cylindrical, dorsoventrally depressed, widest at mid-body and tapering posteriorly.
- **Key crustacean group:**
 - **Some of Macroscopic crustaceans:** Crab, Lobster, Shrimp / Prawn, Krill, and Barnacle.
 - **Some of Microscopic crustaceans:** Copepods, Cladocerans, Ostracods, and Amphipods etc.

Q82. Which of the following statements is/are incorrect regarding *Darwin's Bark Spider*?

1. IUCN conservation status for the species is Endangered.
2. It produces the strongest natural silk known.

Options:

- A. Only 1
- B. Only 2
- C. Both of the above
- D. None of the above

Ans: A

Explanation: Darwin's Bark Spider

- **Named after:** Charles Darwin
- **Habitat:** Madagascar (endemic species)
- **Key Distinction:** Produces the **strongest natural silk** known (tensile strength \approx **10 times stronger than Kevlar** of same thickness).
- **Web Characteristics:**
 - Spins the **largest orb webs** among spiders.
 - Webs can span **up to 25–30 metres** across rivers and streams.
 - Uses wind to carry silk threads across water bodies.
- **IUCN Status:** **Not yet evaluated**



Q83. Consider the following statements regarding Chagos islands:

1. It is an archipelago in the central Pacific Ocean.
2. It hosts military base of USA and UK.
3. Diego Garcia is the largest island on the archipelago.

How many of these statements is/are correct?

- A. 1 and 2 Only
- B. 1 and 3 Only
- C. All of the above
- D. 2 and 3 only

Ans: D

Explanation: Archipelago in the **central Indian Ocean**

- Lies south of the Maldives, east of Seychelles
- **Political Status:** Previously it was administered by the **United Kingdom** as the **British Indian Ocean Territory (BIOT)**
 - Recently UK has transferred it to Mauritius but the UK maintains an initial 99-year lease of Diego Garcia with an option of extension.
- **Largest Island: Diego Garcia**
- Hosts a **major US–UK military base** (strategic importance in Indo-Pacific)

Q84. Which of the following statements about Indian Skimmer is/ are correct:

1. Large rivers, estuaries, lakes, coastal lagoons are habitats for the species.
2. The species is endemic to India.

Options:

- A. Only 1
- B. Only 2
- C. Both of the above
- D. None of the above

Ans: A

Explanation: Skims water surface to catch fish.

- **Habitat: Large rivers, estuaries, lakes, coastal lagoons.**
 - Nests on **sandbars and river islands.**
- **Geographical Distribution:** Indian subcontinent: **India, Bangladesh, Pakistan, Nepal.**
 - Also found in parts of **Southeast Asia.**
- **Conservation Status: IUCN Red List: Endangered**
- Breeds mainly in **dry season.**
- Ground nester; lays eggs on open sandbanks.
- Listed under **Schedule I of the Wildlife (Protection) Act, 1972.**
- Indicator of **healthy riverine ecosystems.**



Q85. Which of the following statements is/are incorrect regarding Environmental Protection Fund:

1. Comptroller and Auditor General of India (CAG) has the authority to audit the Fund.
2. The fund is administered by the Ministry of Environment, Forest and Climate Change.

Options:

- A. Only 1
- B. Only 2
- C. Both of the above
- D. None of the above

Ans: C

Explanation: Environmental Protection Fund (EPF)

- It is a **dedicated fund for environmental restoration and protection** in India.
- Used mainly for **remediation of environmental damage** caused due to pollution or

violations.

- **Nodal authority:** Administered by the Ministry of Environment, Forest and Climate Change (MoEFCC) or anybody notified by the Central Government.

Key features:

- **Source of funds:** Penalties under the Air (Prevention and Control of Pollution) Act, 1981, the Environment (Protection) Act, 1986, interest from investments, and other prescribed sources.
- **Permitted uses (11 activities):** Pollution prevention and mitigation, remediation of contaminated sites, environmental monitoring equipment, clean technology research, IT-enabled systems, laboratory infrastructure, and capacity building of regulatory bodies.
- **Revenue sharing:** 75% of penalty proceeds transferred to the Consolidated Fund of the State/UT, 25% retained by the Centre.
- **Oversight & transparency:** Comptroller and Auditor General of India (CAG) to audit the Fund

Q86. Consider the following statements crustaceans:

1. The President of USA has proposed the concept of Polar Silk Road.
2. It is primarily along the Northern Sea Route (NSR) through the Arctic Ocean..
3. It has the potential to reduce Asia Europe distance by up to 60%.

Choose the correct option:

- A. Only one statement is incorrect
- B. Only 2 statements are incorrect
- C. All the statements are incorrect
- D. None of the above

Ans: B

Explanation: A proposed **Arctic shipping route and cooperation framework** under China's **Belt and Road Initiative (BRI)**.

- **Origin & Objective:** It was jointly announced by China and Russia in 2017. China's 2018 Arctic Policy labelled China a “near-Arctic state” and promoted cooperation on Arctic shipping, resources, and science.
 - China's 2030 goal is to be a “**polar great power**”, recognizing the Arctic's rising strategic and economic value.
- **Route:** Primarily along the **Northern Sea Route (NSR)** through the Arctic Ocean.
 - Connects **East Asia–Europe** via the Arctic, reducing travel distance and time.
- **Strategic Significance:** Offering significantly shorter Asia–Europe distance (**upto 40%**), with the **Northwest Passage** (along Canada's coast) as a secondary option.
- China calls itself a “**Near-Arctic State**” (not legally recognised category).



Q87. With reference to the *Goldilocks Zone for Inflation*, consider the following statements:

1. The Goldilocks zone for inflation refers to a range of inflation that is neither too high nor too low and is considered optimal for sustaining economic growth.
2. In the Indian context, the Goldilocks zone for inflation is legally defined as a fixed inflation rate of exactly 4 percent.
3. Staying within the Goldilocks zone helps maintain real interest rates at levels that are supportive of investment and consumption.

Which of the statements given above is/are incorrect?

- (a) 1 only
- (b) 2 only
- (c) 3 only
- (d) 2 and 3

Ans: (b) 2 only

Explanation: Statement 1 ✓ Correct — Goldilocks zone = “just right” inflation for growth.

- Statement 2 ✗ Incorrect — It is $4\% \pm 2\%$ (2–6%), not a fixed 4% exactly.
- Statement 3 ✓ Correct — Growth-supportive real interest rates is a key benefit.

Q88. Consider the following statements regarding the Kumbhalgarh Wildlife Sanctuary:

1. It is situated in the Aravalli Range and encompasses a UNESCO World Heritage Site.
2. The sanctuary falls under the Khathiar–Gir dry deciduous forest ecoregion, with Dhok as a dominant tree species.
3. It is a known habitat for the Four-horned Antelope and the Sloth Bear.
4. The sanctuary has been notified as an Eco-Sensitive Zone (ESZ) by the Ministry of Environment, Forest and Climate Change.

How many of the statements given above are correct?

- (a) Only one
- (b) Only two
- (c) Only three
- (d) All four

Ans: (d) All four

Explanation:

- **Statement 1 is correct:** It lies in the Aravalli Range and surrounds the Kumbhalgarh Fort, which is a UNESCO World Heritage Site.
- **Statement 2 is correct:** The topography and vegetation fall under the Khathiar–Gir dry deciduous forest ecoregion, where Dhok (*Anogeissus pendula*) is a dominant species.
- **Statement 3 is correct:** The fauna of the sanctuary includes the Leopard, Sloth Bear, Wolf, and the Four-horned Antelope (Chousingha).
- **Statement 4 is correct:** To strengthen conservation efforts in the Aravalli Range, the MoEFCC has notified the sanctuary as an Eco-Sensitive Zone (ESZ).

Q89. With reference to NASA's Artemis II mission, consider the following statements:

1. It is designed as a crewed lunar flyby mission that will utilize a free-return trajectory to return the spacecraft to Earth.
2. The mission involves an international partnership between NASA and the European Space Agency (ESA) to land astronauts on the Moon's far side.
3. It aims to travel farther from Earth than any previous human-crewed mission, reaching a distance of over 230,000 miles.

How many of the statements given above are correct?

- (a) Only one
- (b) Only two
- (c) Only three
- (d) None

Ans: (b) Only two

Explanation:

- **Statement 1 is correct:** Artemis II is a crewed lunar flyby mission (not a landing) that uses the Earth-Moon gravity (free-return trajectory) to ensure a safe return.
- **Statement 2 is incorrect:** While NASA is the primary agency, the Canadian Space Agency (CSA) is the mentioned international partner for this mission. Furthermore, Artemis II is a **flyby** mission only; it does not involve landing on the Moon (the landing is planned for Artemis III).
- **Statement 3 is correct:** The mission will take four astronauts farther into deep space than any humans have travelled before, surpassing the distances reached during the Apollo era.

Q90. With reference to the C-295 transport aircraft, consider the following statements:

1. It is being inducted into the Indian Air Force (IAF) to replace the ageing fleet of Avro HS-748 aircraft.
2. Under the "Make in India" initiative, all 56 aircraft under the current deal are being manufactured in Vadodara by Tata Advanced Systems Ltd (TASL).

Which of the statements given above is/are correct?

- (a) 1 only
- (b) 2 only
- (c) Both 1 and 2
- (d) Neither 1 nor 2

Ans: (a) 1 only

Explanation:

- **Statement 1 is correct:** The C-295 is a medium tactical transport aircraft specifically chosen to replace the IAF's legacy Avro HS-748 fleet.
- **Statement 2 is incorrect:** While the deal is for 56 aircraft, only **40** will be manufactured in India at the Vadodara facility. The first **16** aircraft are being delivered in "fly-away" condition directly from Airbus's final assembly line in Seville, Spain.

Q91. With reference to the UNESCO Media and Information Literacy (MIL) Alliance, consider the following statements:

1. It is a global multistakeholder network recently relaunched with the Cartagena Declaration to strengthen governance and counter disinformation.
2. The Alliance has established its first-ever Global Board and is lead by the International Telecommunication Union (ITU) in collaboration with UNESCO.

Which of the statements given above is/are correct?

- (a) 1 only
- (b) 2 only
- (c) Both 1 and 2
- (d) Neither 1 nor 2

Ans: (a) 1 only

Explanation:

- **Statement 1 is correct:** The Alliance was indeed relaunched with the Cartagena Declaration (October 2025) and functions as a global multistakeholder network focused on countering misinformation, disinformation, and hate speech.
- **Statement 2 is incorrect:** While the Alliance did announce the election of its first-ever Global Board, the **Lead Agency is UNESCO**. The ITU is not mentioned as the lead agency in this context.

Q92. With reference to 'Parakram Diwas', consider the following statements:

1. It is observed annually on 23rd January to commemorate the birth anniversary of Netaji Subhas Chandra Bose.
2. The Kranti Mandir Museum at the Red Fort is one of the key commemorative developments associated with this day and Netaji's legacy.
3. To mark its significance, the Republic Day celebrations in India now officially commence from January 23 instead of January 24.

Which of the statements given above are correct?

- (a) 1 and 2 only
- (b) 2 and 3 only
- (c) 1 and 3 only
- (d) 1, 2 and 3

Ans: D

Explanation:

- **Statement 1 is correct:** Parakram Diwas (Day of Valour) was announced by the Government of India to be celebrated every year on 23 January to honor Netaji Subhas Chandra Bose's selfless service to the nation.
- **Statement 2 is correct:** The Kranti Mandir Museum complex at Red Fort was developed as a tribute to Netaji and the Indian National Army (INA) and is closely linked to these commemorative efforts.
- **Statement 3 is correct:** In 2022, the government decided to start Republic Day celebrations a day earlier—from January 23—to include the birth anniversary of Subhas Chandra Bose, making it a week-long celebration.

Q93. With reference to 'Granth Kutir', inaugurated in January 2026, consider the following statements:

1. It is a dedicated repository established at Rashtrapati Bhavan to preserve and showcase manuscripts and books in India's 11 classical languages.
2. The initiative provides support to the 'Gyan Bharatam Mission' and aims to promote digital access to India's manuscript heritage for researchers.

Which of the statements given above is/are correct?

- (a) 1 only
- (b) 2 only
- (c) Both 1 and 2
- (d) Neither 1 nor 2

Ans: C

Explanation:

- **Statement 1 is correct:** Granth Kutir was inaugurated by President Droupadi Murmu at Rashtrapati Bhavan. It houses a collection of approximately 2,300 books and 50 manuscripts spanning all 11 classical languages of India (Tamil, Sanskrit, Kannada, Telugu, Malayalam, Odia, Marathi, Pali, Prakrit, Assamese, and Bengali).
- **Statement 2 is correct:** It supports the 'Gyan Bharatam Mission,' which focuses on the preservation, digitisation, and dissemination of India's vast manuscript heritage. While physical works are available on the Rashtrapati Bhavan circuit, digital access is provided via an online portal for scholars.

Q94. Consider the following statements regarding Solar Radiation Storms:

1. These storms consist primarily of high-energy charged particles, such as protons and heavy ions, accelerated to near-relativistic speeds.
2. Unlike Coronal Mass Ejections (CMEs), which can take days to reach Earth, solar radiation storms can reach our planet within minutes to a few hours.
3. According to the NOAA Space Weather Scale, an S5 ranking represents a "Minor" storm, while S1 represents the most "Extreme" level of proton flux.
4. While these storms can disrupt aviation GPS and satellite operations, they have no documented impact on human health due to the Earth's atmosphere.

How many of the statements given above are incorrect?

- (a) Only one
- (b) Only two
- (c) Only three
- (d) All four

Ans: B

Explanation:

- **Statement 1 is correct:** Solar Radiation Storms (also called Solar Proton Events) involve protons, electrons, and heavy ions moving at extremely high speeds.
- **Statement 2 is correct:** Because these particles are accelerated to near-relativistic speeds, they arrive much faster than the bulk plasma cloud of a CME.
- **Statement 3 is incorrect:** The scale is the opposite; S1 is Minor and S5 is Extreme. The recent storm mentioned in the text was ranked S4 (Severe).

- **Statement 4 is incorrect:** Solar radiation storms do impact human health, particularly for astronauts in space and occasionally for crew/passengers in high-altitude polar aviation flights due to increased radiation exposure.

Q95. With reference to the Long-Range Anti-Ship Hypersonic Glide Missile (LRAShM) developed by DRDO, consider the following statements:

1. It is a hypersonic cruise missile that utilizes a scramjet engine to maintain a constant speed of Mach 10 throughout its atmospheric flight.
2. It features a two-stage solid booster and an unpowered glide vehicle capable of a maneuvering, quasi-ballistic flight profile.

Which of the statements given above is/are correct?

- (a) 1 only
- (b) 2 only
- (c) Both 1 and 2
- (d) Neither 1 nor 2

Ans: B

Explanation:

- **Statement 1 is incorrect:** The LRAShM is a Hypersonic Glide Vehicle (HGV), not a conventional cruise missile. While it can reach speeds up to Mach 10 during the boost phase, its average glide speed is around Mach 5+. Crucially, unlike a scramjet-powered cruise missile, a glide vehicle is unpowered after the initial boost.
- **Statement 2 is correct:** The weapon system uses a two-stage solid rocket booster to reach the desired altitude and velocity, after which the unpowered glide vehicle detaches. Its ability to perform maneuvering glide (changing direction during flight) distinguishes it from a standard ballistic missile and makes it extremely difficult for traditional missile defense systems to intercept.

Q96. Consider the following statements regarding 'Operation Trashi-I', recently seen in the news:

1. It is a joint counter-terrorism operation launched by the Indian Army and Jammu & Kashmir Police to flush out terrorists from the forested belts of the Kishtwar district.
2. The operation specifically targets high-altitude mountainous regions that serve as traditional infiltration corridors for Pakistan-based terror groups.

Which of the statements given above is/are correct?

- (a) 1 only
- (b) 2 only
- (c) Both 1 and 2
- (d) Neither 1 nor 2

Ans: C

Explanation:

- **Statement 1 is correct:** Operation Trashi-I was launched in January 2026 as a major counter-insurgency effort in Jammu & Kashmir. It involves the Indian Army's White Knight Corps working in tandem with the J&K Police (supported by CRPF) to clear the dense forests of Chatroo and Mandral-Singhpora in the Kishtwar district.

- **Statement 2 is correct:** The area of operation is characterized by high-altitude, rugged terrain and dense forest cover, which has historically been used as an infiltration corridor. The operation utilizes modern tactics like drone surveillance and sniffer dogs to locate terrorists (mainly linked to Jaish-e-Mohammad) hiding in these natural hideouts.

Q97. With reference to the Dugong (Sea Cow), consider the following statements:

1. It is a herbivorous marine mammal that feeds exclusively on seagrass and is listed as 'Critically Endangered' under the IUCN Red List.
2. In India, its natural habitat is restricted to the Gulf of Mannar, Palk Bay, and the Gulf of Kutch.
3. India has established its first Dugong Conservation Reserve in Tamil Nadu.

Which of the statements given above is/are correct?

- a) 1 and 2 only
- b) 3 only
- c) 2 and 3 only
- d) 1, 2, and 3

Ans: B

Explanation:

- **Statement 1 is incorrect:** While the Dugong is indeed a herbivorous marine mammal that eats seagrass, its IUCN status is Vulnerable, not Critically Endangered.
- **Statement 2 is incorrect:** The distribution in India includes the Gulf of Mannar, Palk Bay, and the Gulf of Kutch, but it is not restricted to these areas; they are also found in the Andaman and Nicobar Islands.
- **Statement 3 is correct:** The Dugong is granted the highest level of legal protection in India under Schedule I of the Wildlife (Protection) Act. Furthermore, India's first Dugong Conservation Reserve was notified in 2022 in the Palk Bay region of Tamil Nadu.

Q98. With reference to Muna Island, recently in the news, consider the following statements:

1. It is located in the Flores Sea, situated to the south-east of the Sulawesi mainland in Indonesia.
2. The island is significant for housing the oldest known cave art in the world, dated to approximately 67,800 years ago.

Which of the statements given above is/are correct?

- a) 1 only
- b) 2 only
- c) Both 1 and 2
- d) Neither 1 nor 2

Ans: C

Explanation:

- **Statement 1 is correct:** Muna Island is part of the Southeast Sulawesi province of Indonesia. It is located in the Flores Sea, specifically to the south-east of the main

Sulawesi island and west of Buton Island.

- **Statement 2 is correct:** Recent archaeological dating of rock art found in the limestone caves of Muna Island has pushed back the timeline of human creativity. The art is dated to at least 67,800 years ago, currently making it the oldest identified cave art globally, surpassing previous records from other Indonesian islands like Sulawesi and Borneo.

Q99. With reference to the National Programme on Advanced Chemistry Cell (ACC) Battery Storage, consider the following statements:

1. The scheme is administered by the Ministry of New and Renewable Energy (MNRE) to promote domestic giga-scale battery manufacturing.
2. Advanced Chemistry Cells are characterized by higher energy density and longer life cycles compared to conventional batteries, making them suitable for grid-scale energy storage and electric vehicles.

Which of the statements given above is/are correct?

- a) 1 only
- b) 2 only
- c) Both 1 and 2
- d) Neither 1 nor 2

Ans: B

- **Statement 1 is incorrect:** While the objective is correct, the nodal ministry is the **Ministry of Heavy Industries (MHI)**, not the Ministry of New and Renewable Energy.
- **Statement 2 is correct:** ACCs are the next generation of storage technologies that store electric energy either as electrochemical or as chemical energy and convert it back to electric energy as and when required. They offer superior performance metrics such as **higher energy density**, improved safety, and **longer life cycles**, which are critical for the EV and renewable energy sectors.

Q100. Consider the following statements regarding the Jeevan Raksha Padak series of awards:

1. These awards are administered by the Ministry of Defence and are announced annually on Republic Day.
2. The awards are conferred exclusively upon civilians for meritorious acts of a humane nature in saving lives.
3. The Sarvottam Jeevan Raksha Padak is the highest category in this series and carries a one-time monetary allowance of ₹2 lakh.

How many of the statements given above are incorrect?

- a) Only one
- b) Only two
- c) All three
- d) None

Ans: B (Only two)

- **Statement 1 is incorrect:** While they are announced annually, the administering authority is the **Ministry of Home Affairs (MHA)**, not the Ministry of Defence.
- **Statement 2 is incorrect:** The awards are **not exclusive to civilians**; they are open to

all persons, including government officials and members of the armed forces/uniformed personnel.

- **Statement 3 is correct:** The Sarvottam Jeevan Raksha Padak is indeed the highest category (followed by Uttam and Jeevan Raksha), and it includes a medallion, a certificate, and a monetary allowance of ₹2 lakh.

Q101. With reference to the Dhole (Asiatic Wild Dog), consider the following statements:

1. It is the only truly social forest-dwelling canid native to Asia and is known for its unique whistling calls used for communication.
2. In India, it is currently protected under Schedule I of the Wildlife (Protection) Act, 1972.
3. India holds the largest remaining population of Dholes globally, with the Western Ghats serving as one of its major strongholds.

Which of the statements given above is/are correct?

- a) 1 and 2 only
- b) 2 and 3 only
- c) 1 and 3 only
- d) 1, 2, and 3

Ans: C

Explanation:

- **Statement 1 is correct:** The Dhole is unique as Asia's only truly social forest canid. It is famous for its "whistling" vocalizations, which allow pack members to coordinate while hunting in dense vegetation.
- **Statement 2 is incorrect:** While its IUCN status is indeed **Endangered (EN)**, it is protected under **Schedule II (Part II)** of the Wildlife (Protection) Act, 1972 (not Schedule I).
- **Statement 3 is correct:** India is the global stronghold for the species. Its population is fragmented across 11 countries, but the largest numbers are found in India, particularly in the **Western Ghats**, Central Indian Highlands, and North-East India.

Q102. Consider the following statements regarding the Kurdish Region:

1. The region is characterized by an extensive plateau and mountain system comprising the Zagros and the eastern extension of the Taurus mountains.
2. While Kurds are spread across Turkey, Iran, Iraq, and Syria, they possess constitutionally recognized autonomy in both Iraq and Syria.
3. The Treaty of Sèvres (1920) is the legal document that currently governs the partitioning of Kurdish lands among modern-day Turkey, Iraq, and Syria.

How many of the above statements are incorrect?

- (a) Only one
- (b) Only two
- (c) All three
- (d) None

Ans: (b) Only two

Explanation:

- **Statement 1 is correct:** The geography is indeed dominated by the Zagros and Taurus mountain systems and plateaus.
- **Statement 2 is incorrect:** Only in **Iraq** do the Kurds have constitutionally recognized autonomy (the Kurdistan Regional Government). In Syria, they have *de facto* autonomy in Rojava, but it is not constitutionally recognized.
- **Statement 3 is incorrect:** The Treaty of Sèvres (1920) promised an independent state but was **never implemented**. It was replaced by the **Treaty of Lausanne (1923)**, which partitioned the lands into the modern borders.

Q103. Consider the following statements regarding the Polar Vortex:

1. It is a permanent feature that spins counter-clockwise at the North Pole and clockwise at the South Pole, strengthening during the winter months.
2. The Tropospheric Polar Vortex is a seasonal phenomenon that disappears in summer, while the Stratospheric Polar Vortex exists year-round.
3. Sudden Stratospheric Warming (SSW) can lead to a "Negative Arctic Oscillation" state, causing the jet stream to meander and spill frigid Arctic air into mid-latitudes.

How many of the statements given above are correct?

- (a) Only one
- (b) Only two
- (c) All three
- (d) None

Ans: (b) Only two**Explanation:**

- **Statement 1 is correct:** The vortex is a permanent feature. Its rotation is cyclonic at both poles (counter-clockwise in the North and clockwise in the South) and it strengthens in winter due to the increased temperature gradient.
- **Statement 2 is incorrect:** The roles are reversed. The **Tropospheric** vortex exists year-round, while the **Stratospheric** vortex is seasonal, disappearing during the summer months.
- **Statement 3 is correct:** SSW disrupts the stable vortex, weakening the "fence" (jet stream). This leads to a Negative Arctic Oscillation where the jet stream becomes wavy, allowing cold air to reach regions like the USA, Europe, and Asia.

Q104. Consider the following statements regarding the Sikkim Sundari (*Rheum nobile*):

1. It is a monocarpic herb endemic to the Eastern Himalayas that uses translucent bracts to create a "greenhouse effect" for its flowers.
2. The plant completes its entire life cycle, from germination to flowering and death, within a single growing season of 3 to 5 months.

Which of the statements given above is/are correct?

- (a) 1 only
- (b) 2 only
- (c) Both 1 and 2
- (d) Neither 1 nor 2

Ans: (a) 1 only

Explanation:

- **Statement 1 is correct:** The Sikkim Sundari is indeed a monocarpic plant (blooms once and dies) endemic to the Eastern Himalayas. Its most famous adaptation is the tower of translucent bracts that trap heat and block UV-B radiation, protecting the reproductive organs in the harsh alpine climate.
- **Statement 2 is incorrect:** Although it is monocarpic, it is not an annual plant. It is a perennial that remains in a vegetative rosette stage for **7 to 30 years** to store energy before it finally produces its single, dramatic bloom.

Q105. Consider the following statements regarding Agarwood (*Aquilaria malaccensis*):

1. It is a pathological product formed as a defense mechanism when the tree is infected by a specific mold, rather than being a natural wood type.
2. Under the CITES convention, it is listed in Appendix I, which completely prohibits its international commercial trade.

Which of the statements given above is/are incorrect?

- (a) 1 only
- (b) 2 only
- (c) Both 1 and 2
- (d) Neither 1 nor 2

Ans: B

Explanation:

- **Statement 1 is correct:** Agarwood is indeed a pathological resinous heartwood produced by *Aquilaria* trees when they are infected by a mold (*Phaeoacremonium parasitica*). A healthy tree is odorless; the aromatic resin is produced only to protect the tree from the infection.
- **Statement 2 is incorrect:** Agarwood is listed in **Appendix II** of CITES, not Appendix I. Appendix II allows for controlled international trade to ensure that such trade does not threaten the survival of the species in the wild. In India, the government has even eased norms for its cultivated extraction to support local farmers.

Q106. With reference to 'Wings India 2026', consider the following statements:

1. It is Asia's largest civil aviation and aerospace exhibition, organized jointly by the Ministry of Civil Aviation, Airports Authority of India (AAI), and FICCI.
2. The event is held annually at the Begumpet Airport in Hyderabad to showcase India's aviation market.
3. The theme for the 2026 edition emphasizes a transition from 'Design to Deployment' and 'Manufacturing to Maintenance'.

Which of the statements given above are correct?

- (a) 1 and 2 only
- (b) 2 and 3 only
- (c) 1 and 3 only
- (d) 1, 2 and 3

Ans: C

Explanation:

- **Statement 1 is correct:** Wings India is indeed recognized as Asia's largest civil aviation event. It is a collaborative flagship effort of the **Ministry of Civil Aviation, AAI, and FICCI.**
- **Statement 2 is incorrect:** While the venue (Begumpet Airport, Hyderabad) is correct, Wings India is a **biennial** event (held once every two years), not an annual one.
- **Statement 3 is correct:** The 2026 theme is comprehensive: *"Indian Aviation: Paving the Future – From Design to Deployment, Manufacturing to Maintenance, Inclusivity to Innovation and Safety to Sustainability."* It highlights India's shift toward becoming a manufacturing and MRO (Maintenance, Repair, and Overhaul) hub.

Q107. Consider the following statements regarding the concept of 'Day Zero':

1. It refers to the specific day when a region's total water reserves, including deep groundwater and dead storage, are completely exhausted.
2. The term gained global prominence during the 2018 water crisis in Cape Town, South Africa, which became the first major city to actually reach Day Zero.
3. According to recent UN-backed studies, global freshwater availability per capita has seen a decline of more than 20% since the year 2000.

How many of the statements given above are incorrect?

- (a) Only one
- (b) Only two
- (c) All three
- (d) None

Ans: B**Explanation:**

- **Statement 1 is incorrect:** Day Zero does not mean the water has completely vanished. It is the day when usable water supply falls below a **critical threshold** (usually 13.5% of dam capacity), at which point regular tap supply is stopped and rationing through collection points begins.
- **Statement 2 is incorrect:** While the term became globally popular during the Cape Town crisis in 2018, the city **narrowly avoided** Day Zero through drastic rationing and demand management. It did not actually reach the point where taps were turned off.
- **Statement 3 is correct:** As per global water stress data, freshwater availability per capita has indeed declined by more than 20% since 2000, leading to what the UN calls "global water bankruptcy."

Q108. With reference to the 'Rojava Region', consider the following statements:

1. Geographically, the region is situated in Northeastern Syria and is drained by the Euphrates and Khabur rivers.
2. Historically governed under the ideology of 'Democratic Confederalism', it holds the majority of Syria's oil fields and fertile wheat-producing lands.

Which of the statements given above is/are correct?

- (a) 1 only
- (b) 2 only

- (c) Both 1 and 2
 (d) Neither 1 nor 2

Ans: C

Explanation:

- **Statement 1 is correct:** Rojava (officially DAANES) is located in **Northeastern Syria**. It shares borders with Turkey to the north and Iraq (KRG) to the east. The **Euphrates** and its tributary, the **Khabur**, are the primary life-lines for the region's agriculture and energy.
- **Statement 2 is correct:** The region is famous for its unique political model called **Democratic Confederalism**, which emphasizes grassroots councils and gender equality (**Jineology**). Strategically, it is vital because it contains the **Deir ez-Zor oil fields** (Syria's primary energy resource) and serves as the country's "breadbasket" due to high wheat production.

Q109. With reference to the 'SAMPANN' project, consider the following statements:

1. It is a Comprehensive Pension Management System (CPMS) that digitizes the entire pension life cycle, including the issuance of e-Pension Payment Orders (PPO).
2. The system marks a strategic shift by moving pension disbursement away from a department-led model toward a bank-centric model to improve financial inclusion.

Which of the statements given above is/are correct?

- (a) 1 only
 (b) 2 only
 (c) Both 1 and 2
 (d) Neither 1 nor 2

Ans: A

Explanation:

- **Statement 1 is correct:** SAMPANN (System for Accounting and Management of Pension) is a CPMS that handles everything from case processing and payment disbursement to grievance redressal and reporting. It is specifically designed to provide a seamless digital experience for pensioners (primarily starting with telecom pensioners).
- **Statement 2 is incorrect:** One of the core objectives of SAMPANN is actually a shift from a **bank-centric to a department-led** pension disbursement model. This allows the government to have direct control over the accounting and speed of payments, reducing the time lag often associated with intermediary banks.

Q110. With reference to the 'Menopause Clinics' recently launched in Maharashtra, consider the following statements:

1. Maharashtra is the first state in India to establish a dedicated, state-wide network of menopause clinics within the public healthcare system.
2. These clinics operate as dedicated outpatient departments (OPDs) once a week, specifically every Wednesday, across district and sub-district hospitals.
3. The initiative primarily focuses on surgical interventions, such as promoting elective hysterectomies, to manage severe menopausal symptoms.

Which of the statements given above are correct?

- (a) 1 and 2 only
- (b) 2 and 3 only
- (c) 1 and 3 only
- (d) 1, 2 and 3

Ans: A

Detailed Explanation for Prelims:

- **Statement 1 is correct:** Launched in **January 2026** (on the occasion of Makar Sankranti), Maharashtra became the pioneer in India to mainstream menopause-related care into public health policy with dedicated clinics.
- **Statement 2 is correct:** The clinics follow a structured model where **every Wednesday** is designated for special menopause OPDs. This ensures that the existing healthcare infrastructure is utilized efficiently without disrupting daily routines, while providing a predictable schedule for patients.
- **Statement 3 is incorrect:** The rationale behind these clinics is **non-surgical and holistic**. The focus is on medical consultation, mental health counseling, and screening for conditions like **osteoporosis** and **cardiovascular risks**. In fact, a secondary goal is to *reduce* unnecessary hysterectomies by providing better medical and hormonal management of symptoms.

Q111. Consider the following statements regarding the Ethanol Blending Programme (EBP) in India:

1. The Government of India has advanced the target of achieving 20% ethanol blending in petrol (E20) from 2030 to the year 2025-26.
2. Under the National Policy on Biofuels, Second Generation (2G) ethanol is derived specifically from food sources like sugar beet and damaged food grains.
3. The PM JI-VAN Yojana provides Viability Gap Funding (VGF) to support the commercial ecosystem of 2G ethanol projects.

Which of the statements given above are correct?

- (a) 1 and 2 only
- (b) 2 and 3 only
- (c) 1 and 3 only
- (d) 1, 2, and 3

Ans: C

Explanation:

- **Statement 1 is correct:** India has indeed shifted the E20 deadline to 2025-26 to accelerate energy security.
- **Statement 2 is incorrect:** Ethanol from food sources like sugarcane juice, corn, and broken rice is categorized as **1G (First Generation)**. **2G (Second Generation)** ethanol is produced from non-food "advanced" sources like agricultural waste (rice/wheat straw) and woody biomass.
- **Statement 3 is correct:** PM JI-VAN (Jaiv Indhan- Vatavaran Anukool fasal awashesh Nivaran) specifically targets the financial viability of 2G ethanol plants.

Q112. Consider the following statements regarding Lakkundi, recently in the news for archaeological excavations:

1. Known as the "Cradle of stone temple architecture," it served as a capital for the Hoysala King Veeraballala in the 12th century.
2. The architectural legacy of the site is primarily defined by the Kalyani Chalukya style and the philanthropic contributions of Queen Attimabbe.

Which of the statements given above is/are correct?

- (a) 1 only
- (b) 2 only
- (c) Both 1 and 2
- (d) Neither 1 nor 2

Ans: C

Explanation:

- **Statement 1 is correct:** Lakkundi (Gadag, Karnataka) is famously referred to as the "Cradle of stone temple architecture" and was a significant political center, serving as the capital for Hoysala King Veeraballala II around 1192 AD.
- **Statement 2 is correct:** The site is a masterpiece of Kalyani Chalukya architecture, featuring over 50 temples and numerous stepwells (Kalyanis). It is also deeply associated with Queen Attimabbe, a legendary Jain philanthropist who commissioned numerous basadis and temples in the region.

Q113. Consider the following statements regarding the 'WaSH Warriors' initiative:

1. It is a community-led movement under the Ministry of Housing and Urban Affairs aimed at shifting focus toward government-managed water infrastructure.
2. WaSH Warriors are grassroots champions selected exclusively from villages that have achieved both 'Har Ghar Jal' certification and 'ODF Plus Model' verification.
3. The core philosophy of the initiative is *Jan Bhagidari*, focusing on the long-term sustainability and local maintenance of water and sanitation assets.

How many of the statements given above are incorrect?

- (a) 1 only
- (b) 2 only
- (c) Both 1 and 2
- (d) Neither 1 nor 2

Ans: A

Explanation:

- **Statement 1 is incorrect:** The initiative falls under the **Ministry of Jal Shakti** (Department of Drinking Water and Sanitation), not the Ministry of Housing and Urban Affairs. Furthermore, the focus is on **community-managed systems**, shifting away from purely government-built/managed infrastructure.
- **Statement 2 is correct:** To be a WaSH Warrior, candidates are drawn from **Swachh Sujal Gaon** villages. A village earns this title only when it is both *Har Ghar Jal* certified (Jal Jeevan Mission) and *ODF Plus Model* verified (SBM-G).
- **Statement 3 is correct:** The initiative relies on *Jan Bhagidari* (People's Participation) to ensure that tap connections and sanitation facilities are inclusive, equitable, and

maintained by the community for the long term.

Q114. With reference to the 'PANCHAM' initiative recently seen in the news, consider the following statements:

1. It is a WhatsApp-based AI chatbot developed by the Ministry of Panchayati Raj in technical collaboration with UNICEF.
2. The platform is integrated with the BHASHINI engine to provide multilingual support across all 22 official Indian languages.
3. Access to the tool is open to all rural citizens to ensure the direct delivery of grievance redressal services at the village level.

Which of the statements given above is/are correct?

- (a) 1 and 2 only
- (b) 2 and 3 only
- (c) 1 and 3 only
- (d) 1, 2, and 3

Ans: A

Explanation:

- **Statement 1 is correct:** PANCHAM (Panchayat Assistance and Messaging Chatbot) is an AI tool launched by the Ministry of Panchayati Raj and UNICEF to empower rural local governance.
- **Statement 2 is correct:** By leveraging the BHASHINI engine, the tool allows Sarpanches and ward members to communicate in their local dialects via text or voice notes, bridging the digital and literacy divide.
- **Statement 3 is incorrect:** The primary target audience for PANCHAM is **elected representatives and Panchayat functionaries** (approximately 30 lakh individuals), rather than the general public. Furthermore, authentication is restricted to mobile numbers registered on the **e-GramSwaraj** portal.

Q115. With reference to the 'V-BAT' Autonomous Drones recently in the news, consider the following statements:

1. It is a runway-independent, Group 3 VTOL (Vertical Take-Off and Landing) drone that transitions from vertical take-off to horizontal fixed-wing flight.
2. Due to its integration of visual odometry and edge AI, it is capable of completing missions even in GPS-denied or jammed environments.

Which of the statements given above is/are correct?

- (a) 1 only
- (b) 2 only
- (c) Both 1 and 2
- (d) Neither 1 nor 2

Ans: C

Explanation:

- **Statement 1 is correct:** The V-BAT is unique for its "ducted-fan" design which allows it to take off like a rocket from a small 4m x 4m area (making it runway-independent) and then fly horizontally like a plane for long-endurance missions.

- **Statement 2 is correct:** One of its most advanced features is its ability to operate in "contested environments." By using onboard AI and visual sensors rather than relying solely on satellite signals, it can navigate through electronic warfare jamming where traditional GPS-dependent drones would fail.

Q116. Consider the following statements regarding the Rafah Border Crossing:

1. It is the only terrestrial crossing out of the Gaza Strip that does not lead directly into Israeli territory.
2. The Philadelphi Corridor is a strategic buffer zone along the Egypt-Gaza border that encompasses the Rafah crossing.
3. According to the 2026 arrangement, the crossing is managed solely by the European Union Border Assistance Mission (EUBAM) without any security vetting from Israel.

How many of the statements given above are correct?

- (a) Only one
- (b) Only two
- (c) All three
- (d) None

Ans: B

Explanation:

- **Statement 1 is correct:** Rafah is the southernmost exit and the only one sharing a border with Egypt's Sinai Peninsula, making it the only non-Israeli exit.
- **Statement 2 is correct:** The Philadelphi Corridor is the 14km long narrow strip of land serving as a buffer zone between Egypt and Gaza, which includes the crossing.
- **Statement 3 is incorrect:** While the 2026 arrangement involves the Palestinian Authority and EUBAM, it specifically includes **significant Israeli security vetting** for travelers.

Q117. Consider the following statements regarding the Economic Survey in India:

1. It is a constitutionally mandated document that must be tabled in the Parliament at least 48 hours before the presentation of the Union Budget.
2. It is prepared by the Department of Economic Affairs under the guidance of the Chief Economic Adviser and serves as an advisory document for policy directions.
3. While it reviews the performance of various sectors of the economy, its recommendations are not legally binding on the Government of India.

How many of the statements given above are correct?

- (a) Only one
- (b) Only two
- (c) All three
- (d) None

Ans: B

Explanation:

- **Statement 1 is incorrect:** The Economic Survey is **not mandated by the Constitution** or any specific law. It is a convention. Furthermore, while it is traditionally presented one day before the Budget, there is no "48-hour" legal

requirement.

- **Statement 2 is correct:** It is indeed prepared by the **Department of Economic Affairs (DEA)**, Ministry of Finance, under the leadership of the **Chief Economic Adviser (CEA)**.
- **Statement 3 is correct:** The nature of the recommendations in the Survey is **advisory**. The government may or may not incorporate these suggestions into the Union Budget or future policies.

Q118. Consider the following statements regarding the "Paathara" (Khoni) practice:

1. It is an indigenous underground storage system used primarily for the long-term preservation of freshly harvested paddy.
2. The practice is extensively found in coastal belts as the high moisture levels in seaside soil help in keeping the grain hydrated and fresh.
3. The structure uses a zero-waste approach, employing local materials like straw, clay, and cow dung to create an airtight and pest-proof environment.

How many of the statements given above are incorrect?

- (a) Only one
- (b) Only two
- (c) All three
- (d) None

Ans: A

Explanation:

- **Statement 1 is correct:** Paathara is a traditional scientific method used by farmers in regions like Srikakulam to store paddy for household consumption and rituals.
- **Statement 2 is incorrect:** The tradition specifically thrives in inland, hilly terrains. It is rarely found in coastal belts because high moisture levels in seaside soil would spoil the grain rather than preserve it.
- **Statement 3 is correct:** It is a sustainable, low-cost method that uses only biodegradable local materials to protect the grain from rodents and pests without the use of chemicals.

Q119. Consider the following statements regarding the 'Living Root Bridges':

1. These structures are handcrafted from the aerial roots of trees by the Khasi and Jaintia tribes and are officially nominated for UNESCO World Heritage status under the 'Natural Heritage' category.
2. Unlike conventional infrastructure, these bridges are considered a form of sustainable bio-engineering because they grow stronger over time and are resilient to the extreme monsoon climate of the Shillong Plateau.

Which of the statements given above is/are correct?

- (e) 1 only
- (f) 2 only
- (g) Both 1 and 2
- (h) Neither 1 nor 2

Ans: B

Explanation:

- **Statement 1 is incorrect:** While they are handcrafted by the Khasi and Jaintia tribes, they have been nominated under the '**Cultural Landscape**' category, not the 'Natural Heritage' category.
- **Statement 2 is correct:** They are a prime example of bio-engineering; they thrive in the wettest regions like Mawsynram and Cherrapunji where traditional wooden or metal bridges might rot or corrode, and they indeed gain strength as the tree matures.

Q120. Consider the following statements regarding the 'Power Gap Index':

1. It is an index released by the World Economic Forum to measure how effectively a nation converts its economic wealth into social welfare indicators.
2. A negative Power Gap score, as seen in the case of India, indicates that the country's actual regional influence is lower than what would be expected based on its raw resources.

Which of the statements given above is/are correct?

- (a) 1 only
- (b) 2 only
- (c) Both 1 and 2
- (d) Neither 1 nor 2

Ans: B**Explanation:**

- **Statement 1 is incorrect:** The Power Gap Index is a secondary measure derived from the **Asia Power Index**, which is published by the **Lowy Institute** (an Australian think tank), not the World Economic Forum. It measures geopolitical influence efficiency, not social welfare.
- **Statement 2 is correct:** A negative score defines an "Underperformer." Despite being the 3rd most powerful state in Asia, India has a negative score of -4.0, signifying that it is "punching below its weight" in terms of converting resources into diplomatic or strategic influence.